

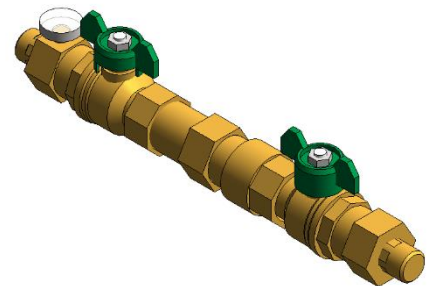
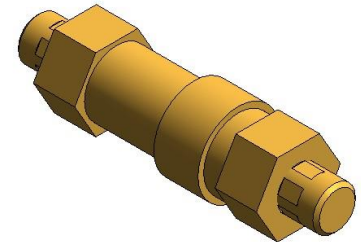
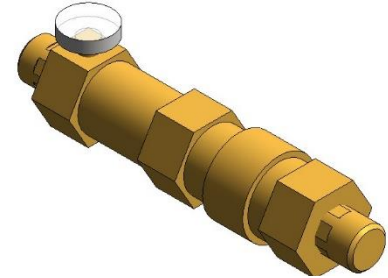
FlowCal™, FlowCal+™ Automatic Balancing Valves

© Copyright 2022 Caleffi

127AF, 127AFC Series

Revit Content Instructions Guide

| | |
|------------------------------------|--|
| Manufacturer & Product: | Caleffi FlowCal+ 127AFC and FlowCal 127AF |
| Files: | Valve-Balancing-Caleffi-FlowCal+-Compact_127AFC.rfa Valve-Balancing-Caleffi-FlowCal-Compact_127AF.rfa |
| Type Catalogs: | Valve-Balancing-Caleffi-FlowCal+-Compact_127AFC.txt Valve-Balancing-Caleffi-FlowCal-Compact_127AF.txt |
| Rendering file: | Not Applicable |
| Schedule file: | Not Applicable |



These families contain the following main variations or types:

- 0.5in. MNPT_127140AFC w/ Temperature Gauge
- 0.5in. MNPT_127141AFC
- 0.5in. Press_127147AFC w/ Temperature Gauge
- 0.5in. Press_127146AFC
- 0.5in. Sweat_127148AFC w/ Temperature Gauge
- 0.5in. Sweat_127149AFC
- 0.75in. MNPT_127150AFC w/ Temperature Gauge
- 0.75in. MNPT_127151AFC
- 0.75in. Press_127157AFC w/ Temperature Gauge
- 0.75in. Press_127156AFC
- 0.75in. Sweat_127158AFC w/ Temperature Gauge
- 0.75in. Sweat_127159AFC
- 1in. MNPT_127160AFC w/ Temperature Gauge
- 1in. MNPT_127161AFC
- 1in. Press_127167AFC w/ Temperature Gauge
- 1in. Press_127166AFC
- 1in. Sweat_127168AFC w/ Temperature Gauge
- 1in. Sweat_127169AFC
- 0.5in. PEX Expansion_127143AFC w/ Temperature Gauge
- 0.5in. PEX Expansion_127142AFC
- 0.5in. PEX Crimp_127145AFC w/ Temperature Gauge
- 0.5in. PEX Crimp_127144AFC
- 0.75in. PEX Expansion_127153AFC w/ Temperature Gauge
- 0.75in. PEX Expansion_127152AFC
- 0.75in. PEX Crimp_127155AFC w/ Temperature Gauge
- 0.75in. PEX Crimp_127154AFC
- 1in. PEX Expansion_127163AFC w/ Temperature Gauge
- 1in. PEX Expansion_127162AFC
- 1in. PEX Crimp_127165AFC w/ Temperature Gauge
- 1in. PEX Crimp_127164AFC
- 0.5in. MNPT_127341AF
- 0.5in. Press_127346AF
- 0.5in. Sweat_127349AF
- 0.5in. PEX Expansion_127342AF
- 0.5in. PEX Crimp_127344AF
- 0.75in. MNPT_127351AF
- 0.75in. Press_127356AF
- 0.75in. PEX Expansion_127352AF
- 0.75in. PEX Crimp_127354AF
- 0.75in. Sweat_127359AF

- 1in. MNPT_127361AF
- 1in. Press_127366AF
- 1in. Sweat_127369AF
- 1in. PEX Expansion_127362AF
- 1in. PEX Crimp_127364AF

Instance Properties

Here is a curated list of notable parameters for the Revit user within the Caleffi FlowCal+ 127AFC and FlowCal 127AF families.

| Construction | |
|--|---|
| Isolation Valve on Inlet (default) | This controls visibility of the isolation valve on the inlet. |
| Isolation Valve on Inlet Stem Extension (default) | This controls visibility of the isolation valve stem extension on the inlet. |
| Isolation Valve on Outlet (default) | This controls visibility of the isolation valve on the outlet. |
| Isolation Valve on Outlet Stem Extension (default) | This controls visibility of the isolation valve stem extension on the outlet. |
| Mechanical - Flow | |
| ▼ Desired Flow Rate Selection (default) <ol style="list-style-type: none"> 1. 0.35 GPM 2. 0.50 GPM 3. 0.75 GPM 4. 1.00 GPM 5. 1.30 GPM 6. 1.50 GPM 7. 1.70 GPM 8. 2.00 GPM 9. 2.20 GPM 10. 2.50 GPM 11. 2.60 GPM 12. 3.00 GPM 13. 3.50 GPM 14. 4.00 GPM 15. 4.50 GPM 16. 5.00 GPM 17. 6.00 GPM 18. 7.00 GPM 19. 8.00 GPM 20. 9.00 GPM 21. 10.00 GPM | Select the desired fixed flow rate. |
| Mechanical - Loads | |
| Pressure Drop Feet of Water (default) | Specify the pressure drop in feet of water. |
| System Pressure Drop (default) | This tells you the system pressure drop. |

When the isolation valve check box is selected for the family, isolation valve is placed on the port corresponding to the box. All the applicable boxes need to be checked for desired configuration.

Type Properties

Here is a curated list of notable parameters for the Revit user within the Caleffi FlowCal+ 127AFC and FlowCal 127AF families.

127AFC FlowCal+

| Materials | |
|------------------------------------|---|
| Valve Body Material | Metal - Caleffi - Brass |
| Seal Material | Rubber - Caleffi - EPDM |
| Identity Data | |
| Assembly Code | D2090800 |
| Contact URL* | http://www.caleffi.com/usa/en-us/contacts/contact-us |
| Copyright* | ©Caleffi North America |
| Cost | |
| Description | Automatic Balancing Valve |
| Family Version* | 2 |
| Keynote | |
| Manufacturer | Caleffi North America, Inc. |
| Model | 127141AFC |
| Manufacturer Complete Model Number | 127140AFC G35 |

| | |
|-------------------|---|
| Product Page URL* | https://www.caleffi.com/usa/en-us/catalogue/flowcaltm-dynamic-balancing-valve-low-lead-127141afc |
| Type Comments | |
| Type Image | |
| Series* | FlowCal+ 127AFC Series |
| Standards* | NSF/ANSI/CAN 372; S.3874; Vermont Act 193; Maryland's Lead-Free Law; Reduction of Lead in Drinking Water Act - California Health and Safety Code 116875 |
| URL | https://www.caleffi.com/usa/en-us |

127AF FlowCal

| Materials | |
|------------------------------------|---|
| Valve Body Material | Metal - Caleffi - Brass |
| Seal Material | Rubber - Caleffi - EPDM |
| Identity Data | |
| Assembly Code | D2090800 |
| Contact URL* | http://www.caleffi.com/usa/en-us/contacts/contact-us |
| Copyright* | ©Caleffi North America |
| Cost | |
| Description | Automatic Balancing Valve |
| Family Version* | 2 |
| Keynote | |
| Manufacturer | Caleffi North America, Inc. |
| Model | 127341AF |
| Manufacturer Complete Model Number | 127140AF G35 |
| Product Page URL* | http://www.caleffi.com/usa/en-us/catalogue/flowcaltm-compact-automatic-flow-balancing-valves-low-lead-127341af |
| Type Comments | |
| Type Image | |
| Series* | FlowCal 127AF Series |
| Standards* | NSF/ANSI/CAN 372; S.3874; Vermont Act 193; Maryland's Lead Free Law;Reduction of Lead in Drinking Water Act - California Health and Safety Code 116875 |
| URL | https://www.caleffi.com/usa/en-us |

Half tone text in the property tables indicates that the value is locked from editing.

*Indicates Shared Parameter and can be scheduled

Rendering

Note: Standard Caleffi materials are imported. These may be modified, but please ensure that the modification selection matches an actual manufacturer supplied option.

Loading and Placing into the Project

To work with the Caleffi FlowCal+ 127AFC and FlowCal 127AF in Revit, multiple families and variations within type catalogs are provided. Navigate to the Insert Tab > Load Family button on the Revit ribbon to load the family. Be sure the type catalog (.txt) file is located in the same folder as the family you are loading.

Please ensure that the visibility settings within the project are modified to have the Piping category visible.

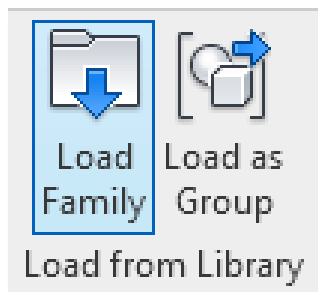


Figure 1 - Insert Tab > Load Family

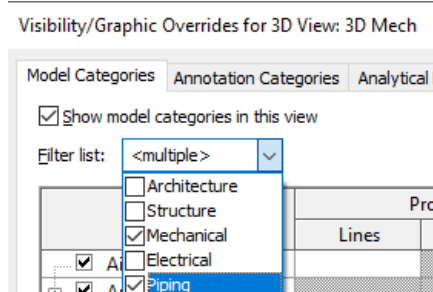


Figure 2 - Visibility/Graphic Overrides

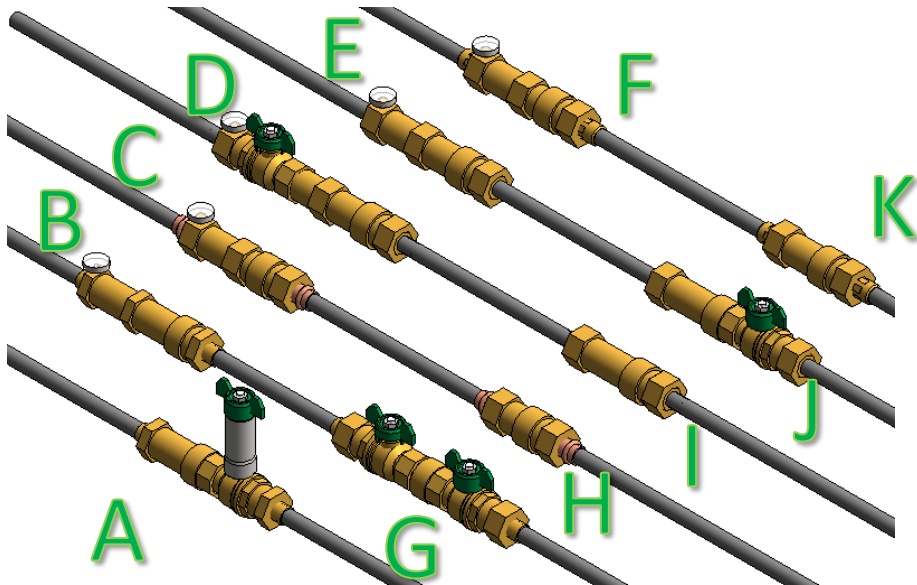


Figure 3 - Caleffi FlowCal+ 127AFC and FlowCal 127AF

- | | |
|---|---|
| <ul style="list-style-type: none"> A. FlowCal+ with Sweat tailpieces with isolation valve with stem extension on Inlet B. FlowCal+ with Press tailpieces C. FlowCal+ with PEX expansion tailpieces D. FlowCal+ with PEX Crimp tailpieces with isolation valve on outlet E. FlowCal+ with MNPT tailpieces | <ul style="list-style-type: none"> F. FlowCal+ with Sweat tailpieces and without temperature gauge G. FlowCal with Sweat tailpieces and with temperature gauge and also isolation valves on both ports H. FlowCal with Press tailpieces I. FlowCal with PEX expansion tailpieces J. FlowCal with PEX Crimp tailpieces with isolation valve on inlet K. FlowCal with MNPT tailpieces |
|---|---|

Project Behavior

One way to place a Caleffi FlowCal+ 127AFC and FlowCal 127AF is to go to the Systems Tab on the Revit ribbon and navigate to the Component button with Place a Component fly-out selected.

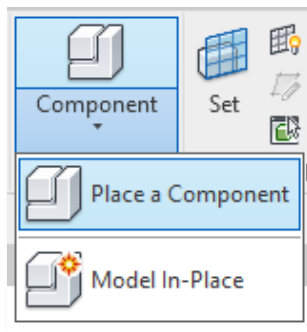


Figure 4 - Systems Tab > Component > Place a Component

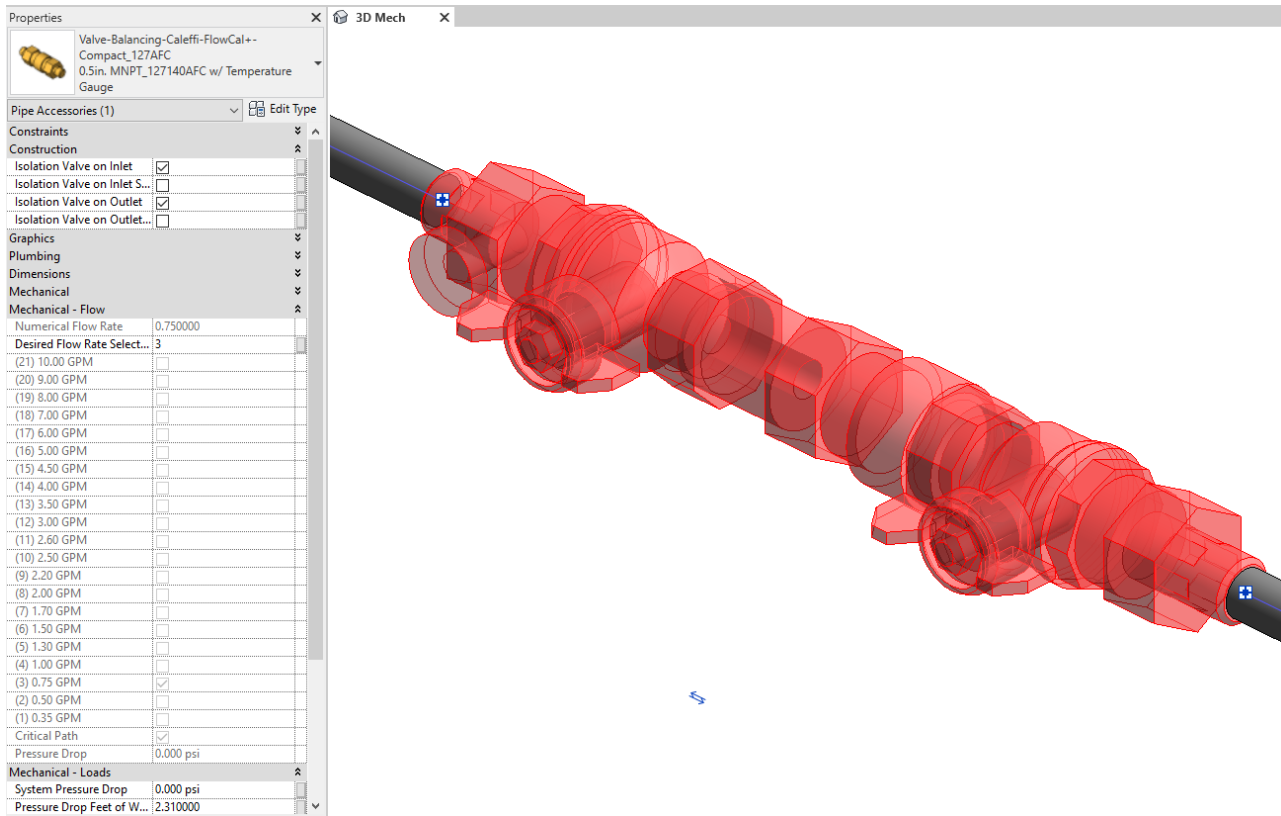


Figure 5 – The Caleffi FlowCal+ 127AFC and FlowCal 127AF families can be found under pipe accessories in the project browser and placed directly onto pipe of the same size. Shown here is a flow rate selection of “3,” which yields 0.75 GPM, as well as selections for isolation valves/stem extensions.

Schedule Creation

Within the type and instance properties dialogues, the Revit user will find useful information for scheduling purposes such as Type, Part Description, Part Number/Model, Family Version, Manufacturer, Series, & Product Page URL. The resulting Pipe Accessories schedule in your project will show counts/quantities of the Caleffi FlowCal+ 127AFC and FlowCal 127AF as well as separate quantities/counts of any separately purchased accessory products that do not come in box with the Caleffi FlowCal+ 127AFC and FlowCal 127AF.