

**Servocomando proporzionale con funzione fail-safe**

**Proportional actuator with fail-safe function**

**Servomoteur proportionnel avec fonction fail-safe**

**Proportionaler Stellantrieb mit Failsafe-Sicherheitsfunktion**

**Servomando proporcional con función fail-safe**

**Proportionele servomotor met fail-safefunctie**

**Proportionellt manöverdon med felsäker funktion**

**Proporcionální akční člen s bezpečnostní funkcí**

**Serwosterowanie proporcjonalne z funkcją fail-safe**

**Пропорциональный сервопривод с функцией безопасности fail-safe**

**Proporcionális működtető üzembiztos funkcióval**

**带故障防护功能的比例式执行机构**

- Istruzioni di montaggio

- Mounting instructions

- Instructions de montage

- Montagehinweis

- Indicaciones de montaje

- Montage-instructie

- Montageanvisning

- Pokyny pro montáž

- Instrukcja montau

- Указание по монтажу

- Szerelési útmutató

- 安装提示

**IT**

**EN**

**FR**

**DE**

**ES**

**NL**

**SV**

**CS**

**PL**

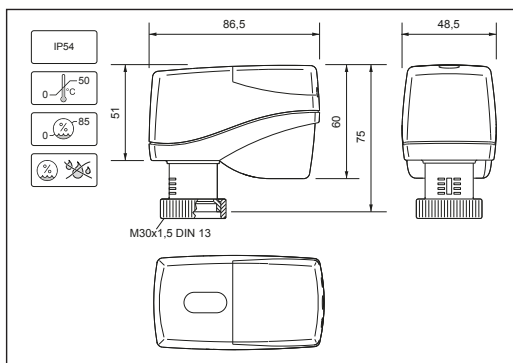
**RU**

**HU**

**ZH**

© Copyright 2023 Caleffi

**145018 code**



**ATTENZIONE!**

**NOTICE!**

**ATTENTION!**

**¡ATENCIÓN!**

**LET OP!**

**VARNING!**

**POZOR!**

**UWAGA!**

**ВНИМАНИЕ!**

**FIGYELEM!**

注意

Fare svolgere i lavori di montaggio e installazione solo da parte di personale qualificato.

Assembly and installation may only be carried out by qualified specialist personnel.

Le montage et l'installation doivent uniquement être effectués par du personnel qualifié.

Montage und Installation darf nur durch qualifiziertes Fachpersonal vorgenommen werden.

El montaje y la instalación sólo lo puede realizar personal técnico calificado.

Montage en installatie mogen slechts door geschoold personeel met de nodige kwalificatie worden uitgevoerd.

Montage och installation får endast ske av kvalificerad fackpersonal.

Montáž a instalaci smí provádět pouze kvalifikovaný odborný personál.

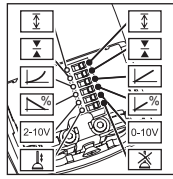
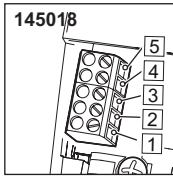
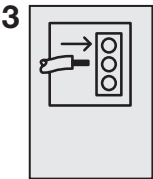
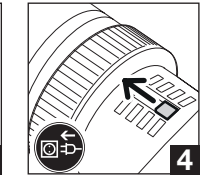
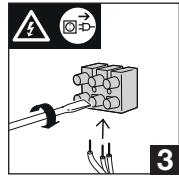
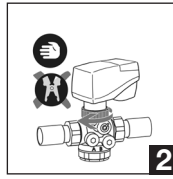
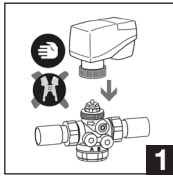
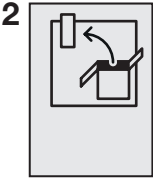
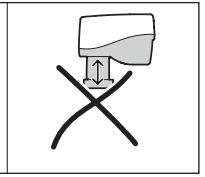
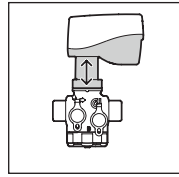
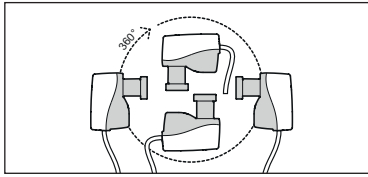
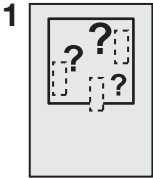
Montaż i instalację mogą przeprowadzać tylko wykwalifikowani specjaliści.

Монтаж и установка должны производиться только квалифицированным техперсоналом.

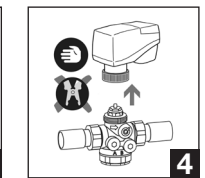
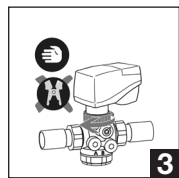
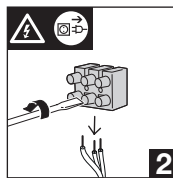
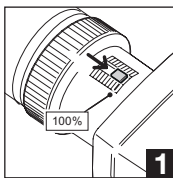
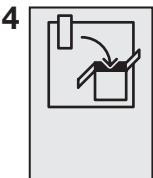
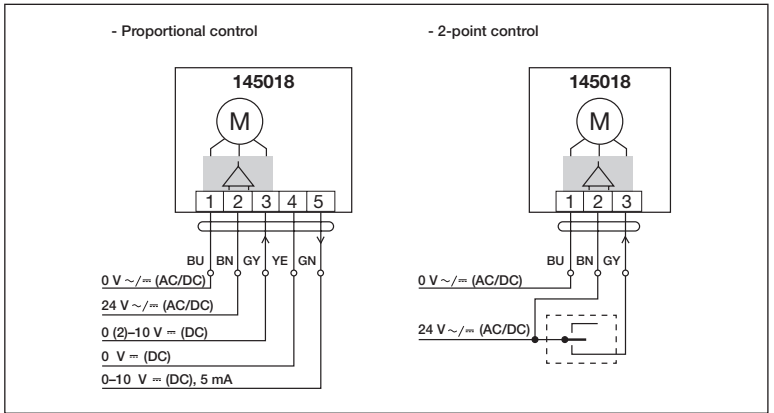
A szerelés és telepítést csak szakképzett személyek végezhetik.

安装工作只能由具备相应资质的专业技术人员进行。





- 6 - Auto stroke detection
- 5 - Fail safe set
- 4 - Eq % / Lin
- 3 - Reverse / Direct action
- 2 - DC 2-10 V / DC 0-10 V
- 1 - Anti-clog



**Manufactured by Kieback&Peter GmbH & Co. KG**  
 Tempelhofer Weg 50, 12347 Berlin/Germany  
 Telefon +49 30 600 95 - 0, Fax +49 30 600 95 - 164  
 www.kieback-peter.de, info@kieback-peter.de

