

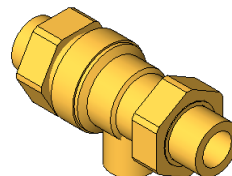
573 FlowShield™ DuC-AV Dual-Check Backflow Preventer

© Copyright 2024 Caleffi

573 Series

Revit Content Instructions Guide

Manufacturer & Product: Caleffi 573 FlowShield™ DuC-AV Dual-Check Backflow Preventer
Files: Dual Check Backflow Preventer-Caleffi-573.rfa
Type Catalogs: Not Applicable
Rendering file: Not Applicable
Schedule file: Not Applicable



These families contain the following main variations or types:

- Size variations include 0.5in. and 0.75in. (NPT Female connection type)
- Connection types include 'NPT Female', 'Press', 'Sweat' and 'Sweat Inlet x NPT Female Outlet'

Instance Properties

Here is a curated list of notable parameters for the Revit user within the Caleffi 573 FlowShield™ DuC-AV Dual-Check Backflow Preventer families.

Graphics	
Annotation Offset RL (default)	This controls offset of annotation symbol
Mechanical - Flow	
Flow Rate (default)	This tells you the flow that this component is reading in the system
Mechanical - Loads	
Pressure Drop Feet of Water (default)	Specify the pressure drop in feet of water.
System Pressure Drop (default)	This tells you the system pressure drop.

When the isolation valve check box is selected for the family, isolation valve is placed on the port corresponding to the box. All the applicable boxes need to be checked for desired configuration.

Type Properties

Here is a curated list of notable parameters for the Revit user within the Caleffi 573 FlowShield™ DuC-AV Dual-Check Backflow Preventer family.

Materials	
Valve Body Material	Metal - Caleffi - Brass
Seal Material	Rubber - Caleffi - EPDM
Identity Data	
Assembly Code	D2020
Contact URL*	http://www.caleffi.com/usa/en-us/contacts/contact-us
Copyright*	©Caleffi North America
Cost	
Description	Dual check continuous pressure backflow preventer with atmospheric vent
Family Version*	2
Keynote	
Manufacturer	Caleffi North America, Inc.
Model	573403A
Product Page URL*	https://www.caleffi.com/en-us/products/backflow-prevention-and-safety-devices/backflow-preventers
Type Comments	backflow-preventers
Type Image	
Series*	573
URL	https://www.caleffi.com/usa/en-us

Halftone text in the property tables indicates that the value is locked from editing.

*Indicates Shared Parameter and can be scheduled

Rendering

Note: Standard Caleffi materials are imported. These may be modified, but please ensure that the modification selection matches an actual manufacturer supplied option.

Loading and Placing into the Project

To work with the Caleffi 573 FlowShield™ DuC-AV Dual-Check Backflow Preventer in Revit, a family is provided. Navigate to the Insert Tab > Load Family button on the Revit ribbon to load the family. If applicable, be sure the type catalog (.txt) file is located in the same folder as the family you are loading.

Please ensure that the visibility settings within the project are modified to have the Piping category visible.

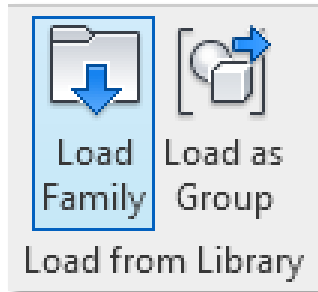


Figure 1 - Insert Tab > Load Family

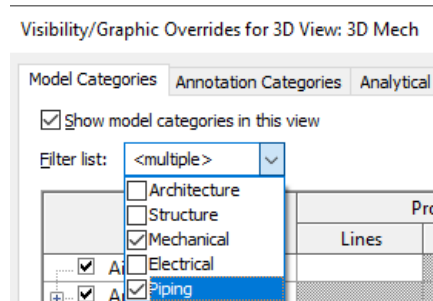


Figure 2 - Visibility/Graphic Overrides

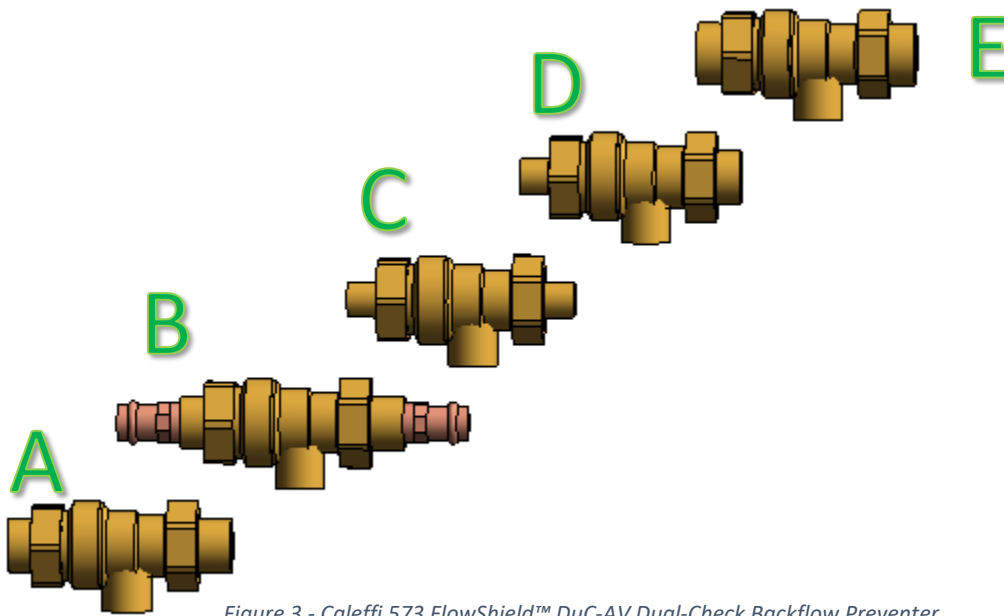


Figure 3 - Caleffi 573 FlowShield™ DuC-AV Dual-Check Backflow Preventer

- A. 0.5in. 573403A with NPT Female inlet and outlet connection type
- B. 0.5in. 573406A with Press inlet and outlet connection type
- C. 0.5in. 573409A with Sweat inlet and outlet connection type
- D. 0.5in. 573493A with Sweat inlet and NPT Female outlet connection type
- E. 0.75in. 573503A with NPT Female inlet and outlet connection type

Project Behavior

One way to place a Caleffi 573 FlowShield™ DuC-AV Dual-Check Backflow Preventer is to go to the Systems Tab on the Revit ribbon and navigate to the Component button with Place a Component fly-out selected

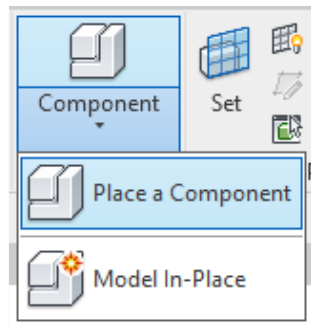


Figure 4 - Systems Tab > Component > Place a Component

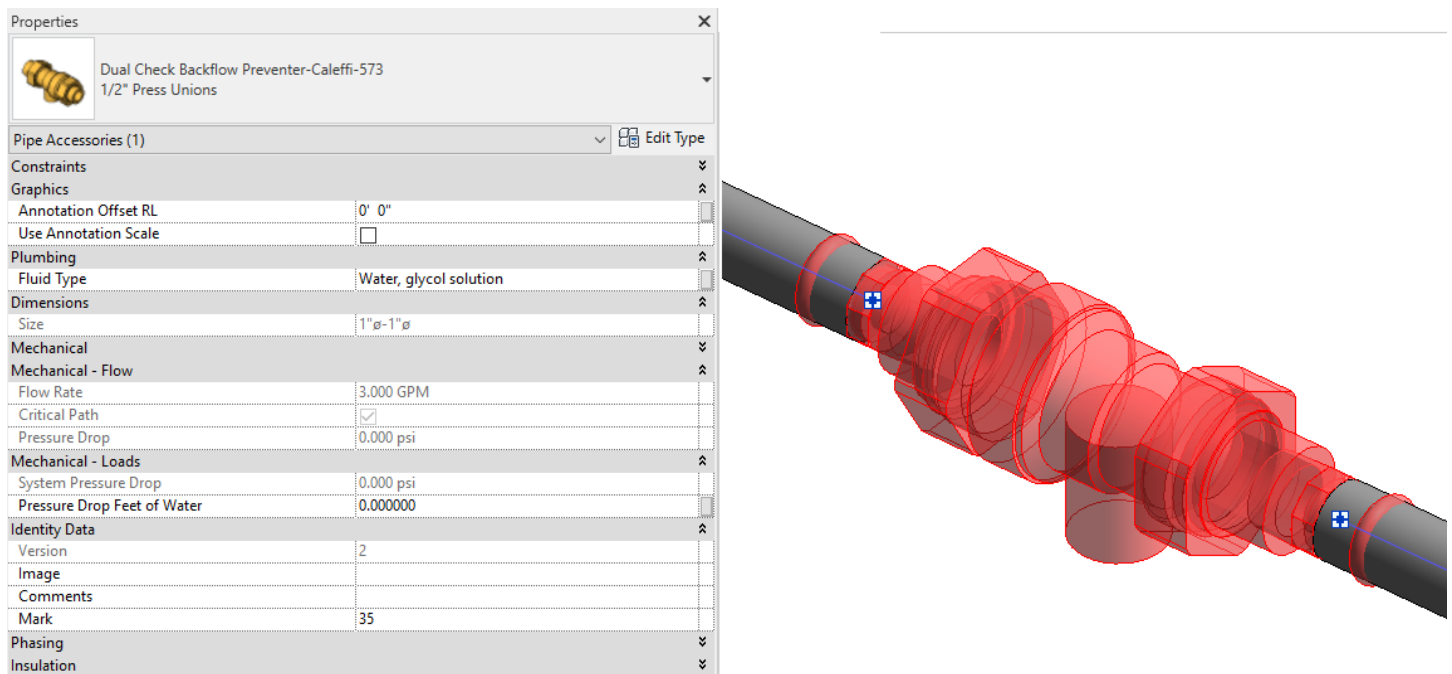


Figure 5 – The Caleffi 573 FlowShield™ DuC-AV Dual-Check Backflow Preventer family can be found under pipe accessories in the project browser and placed directly onto pipe of the same size.

Schedule Creation

Within the type and instance properties dialogues, the Revit user will find useful information for scheduling purposes such as Type, Part Description, Part Number/Model, Family Version, Manufacturer, Series, & Product Page URL. The resulting Pipe Accessories schedule in your project will show counts/quantities of the Caleffi 573 FlowShield™ DuC-AV Dual-Check Backflow Preventer as well as separate quantities/counts of any separately purchased accessory products that do not come in box with the Caleffi 573 FlowShield™ DuC-AV Dual-Check Backflow Preventer.