

5517 DISCAL® Air Separator

© Copyright 2024 Caleffi

5517 Series

Revit Content Instructions Guide

Manufacturer & Product:

Caleffi 5517 DISCAL Air Separator

Files:

DISCAL_Air_Separators_for_Vertical_or_Horizontal_Pipes-CALEFFI-5517A.rfa

Type Catalog:

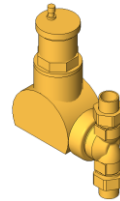
Not Applicable

Rendering file:

Not Applicable

Schedule file:

Not Applicable



This family contains the following main variations or types:

- Sizes include 0.75in., 1in.
- Connection Types include MNPT, Press, Sweat
- 290030/290031 valves are available on inlet and outlet

Instance Properties

Here is a curated list of notable parameters for the Revit user within the Caleffi 5517 DISCAL Air Separator family.

Construction	
Isolation Valve Availability (default)	This shows text information about which valve is available for selection on inlet/outlet
Inlet Isolation Valve (default)	This controls the isolation valve type on the inlet.
(0) No Isolation Valve on Inlet (default)	This is active if no isolation valve is selected on inlet
(1) 290030 Isolation Valve on Inlet (default)	This is active if 290030 isolation valve is selected on inlet
(2) 290031 Isolation Valve on Inlet (default)	This is active if 290031 isolation valve is selected on inlet
Outlet Isolation Valve (default)	This controls the isolation valve type on the outlet.
(0) No Isolation Valve on Outlet (default)	This is active if no isolation valve is selected on outlet
(1) 290030 Isolation Valve on Outlet (default)	This is active if 290030 isolation valve is selected on outlet
(2) 290031 Isolation Valve on Outlet (default)	This is active if 290031 isolation valve is selected on outlet
Air Separator Installation Angle (default)	This controls the installation angle of air separator
Mechanical - Flow	
Design Flow Rate (default)	This tells you the flow that this component is reading in the system.
Flow Warning (default)	This tells you a warning if the flow rate exceeds the maximum allowable.
Mechanical - Loads	
Pressure Drop Feet of Water (default)	Specify the pressure drop in feet of water.
System Pressure Drop (default)	This tells you the system pressure drop.

Type Properties

Here is a curated list of notable parameters for the Revit user within the Caleffi 5517 DISCAL Air Separator family.

Materials	
Valve Body Material	Metal - Caleffi - Brass
Identity Data	
Assembly Code	D3040
Contact URL*	http://www.caleffi.com/usa/en-us/contacts/contact-us
Copyright*	©Caleffi North America
Cost	
Description	Air separator with rotating collar for horizontal or vertical pipes
Family Version*	2
Keynote	
Manufacturer	Caleffi North America, Inc.
Model	551795A

Product Page URL*	https://www.caleffi.com/usa/en-us/catalogue/discalr-air-separators-vertical-or-horizontal-pipes-brass-551705a
Type Comments	
Type Image	
Series*	5517 Series
URL	https://www.caleffi.com/usa/en-us

Half tone text in the property tables indicates that the value is locked from editing.

*Indicates Shared Parameter and can be scheduled

Rendering

Note: Standard Caleffi materials are imported. These may be modified, but please ensure that the modification selection matches an actual manufacturer supplied option.

Loading and Placing into the Project

To work with the Caleffi 5517 DISCAL Air Separator in Revit, a family is provided. Navigate to the Insert Tab > Load Family button on the Revit ribbon to load the family. If applicable, be sure the type catalog (.txt) file is located in the same folder as the family you are loading.

Please ensure that the visibility settings within the project are modified to have the Piping category visible.

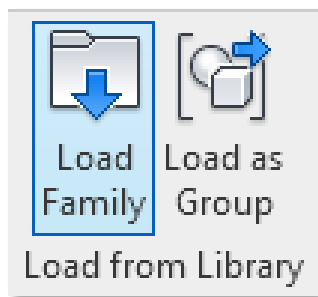


Figure 1 - Insert Tab > Load Family

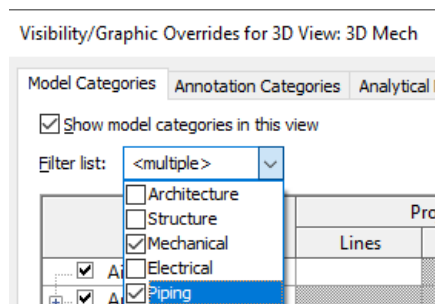


Figure 2 - Visibility/Graphic Overrides

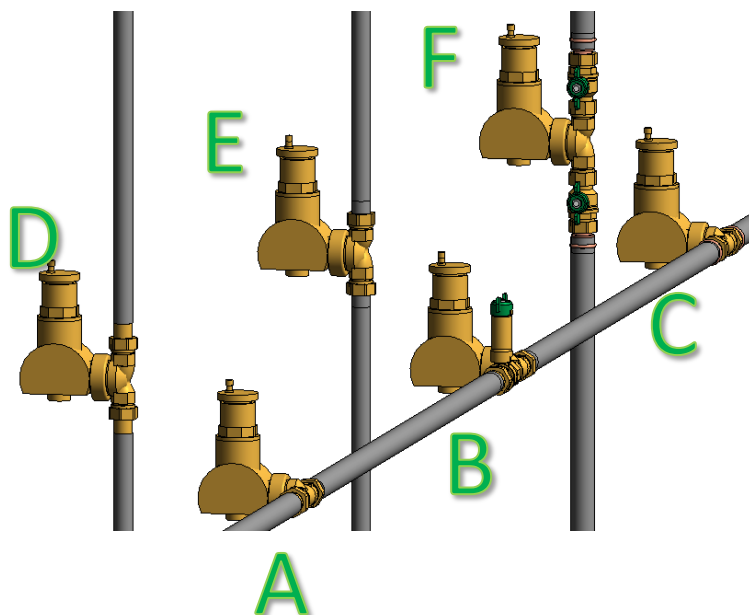


Figure 3 - Caleffi 5517 DISCAL Air Separator

5517 Variations

- A. 1" NPT Union 551706A
- B. 1" Sweat Union 551796A with 290031 valve on inlet
- C. 1" Press Union 551766A
- D. 3/4" NPT Union 551705A
- E. 3/4" Sweat Union 551795A
- F. 3/4" Press Union 551765A with 290030 valve on inlet and outlet

Project Behavior

One way to place a Caleffi 5517 DISCAL Air Separator is to go to the Systems Tab on the Revit ribbon and navigate to the Component button with Place a Component fly-out selected.

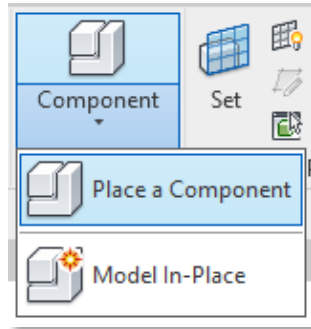


Figure 4 - Systems Tab > Component > Place a Component

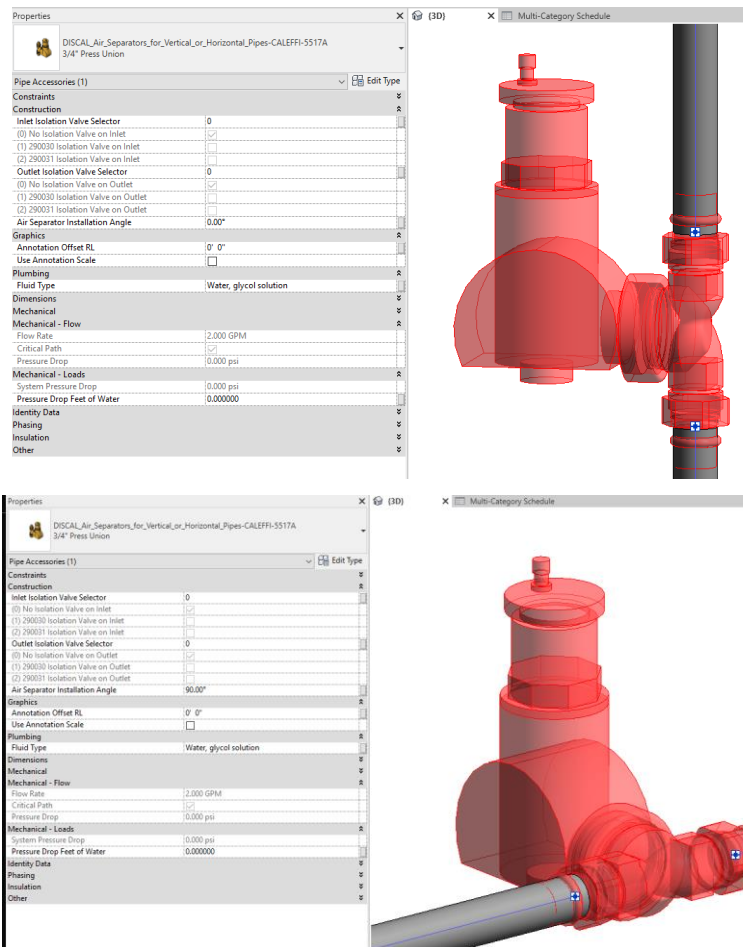


Figure 5 – The Caleffi 5517 DISCAL Air Separator family can be found under pipe accessories in the project browser and placed directly onto pipe of the same size. It will then read flows and consider pressure drop in the system. In this case, horizontal and vertical configurations with and without isolation valves are shown.

Schedule Creation

Within the type and instance properties dialogues, the Revit user will find useful information for scheduling purposes such as Type, Part Description, Part Number/Model, Family Version, Manufacturer, Series, & Product Page URL. The resulting Mechanical Equipment schedule in your project will show counts/quantities of the Caleffi 5517 DISCAL Air Separator as well as separate quantities/counts of any separately purchased accessory products that do not come in box with the Caleffi 5517 DISCAL Air Separator.

