

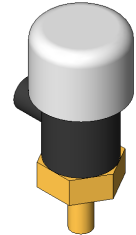
337221A Manual Air Vent

© Copyright 2023 Caleffi

337221A Manual Air Vent

Revit Content Instructions Guide

Manufacturer & Product: Caleffi 337221A Series Manual Air Vent
Files: *Manual_Air_Vent-Caleffi-337221A.rfa*
Type Catalogs: Not Applicable
Rendering file: Not Applicable
Schedule file: Not Applicable



The 0BCaleffi 337221A Series Manual Air Vent family contains the following main variations or types:

- 0.25in. NPT Male, 337221A

Type Properties

Here is a curated list of notable parameters for the Revit user in the 0BCaleffi 337221A Series Manual Air Ventfamily.

Materials	
Body Material	Metal - Caleffi – Brass
Cap Material	Glass Reinforced Nylon - Caleffi
Adjustable Ring Material	Polyethylene Foam - Caleffi - Black
Identity Data	
Assembly Code*	D2090
Contact URL*	https://www.caleffi.com/usa/en-us/contacts/contact-us
Copyright*	©Caleffi North America
Cost	
Description*	Manual Air Vent
Version*	1
Keynote	
Manufacturer*	Caleffi North America, Inc.
Model*	337221A
Product Page URL*	https://www.caleffi.com/usa/en-us/catalogue/manual-air-vent-337221a
Type Comments	
Type Image	
Series*	337221A Series
URL*	http://www.caleffi.com/usa/en-us

Half-tone text in the property tables indicates that the value is locked from editing.

*Indicates Shared Parameter and can be scheduled. Product specifications documentation can be accessed using the Product Page URL.

Rendering

Note: Standard Caleffi materials are imported. These may be modified, but please ensure that the modification selection matches an actual manufacturer supplied option.

Loading and Placing into the Project

To work with the 0BCaleffi 337221A Series Manual Air Vent in Revit, navigate to the Insert Tab > Load Family button on the Revit ribbon to load the family.

Please ensure that the visibility settings within the project are modified to have the Piping category visible.

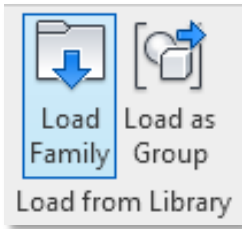


Figure 1 - Insert Tab > Load Family

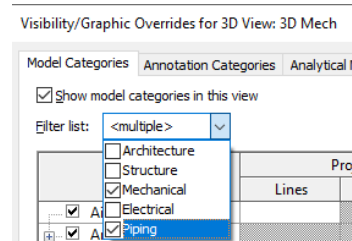
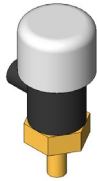


Figure 2 - Visibility/Graphics Overrides



A. 0.250 in. NPTM connection

Figure 3 - OBCaleffi 337221A Series Manual Air Vent size variations in a sample Revit project

Project Behavior

One way to place a OBCaleffi 337221A Series Manual Air Vent is to go to the Systems Tab on the Revit ribbon and navigate to the Component button with Place a component fly-out selected. For vertical placement, using an elevation view is recommended.

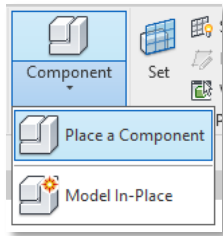


Figure 4 - Systems Tab > Component > Place a Component

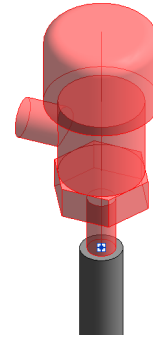
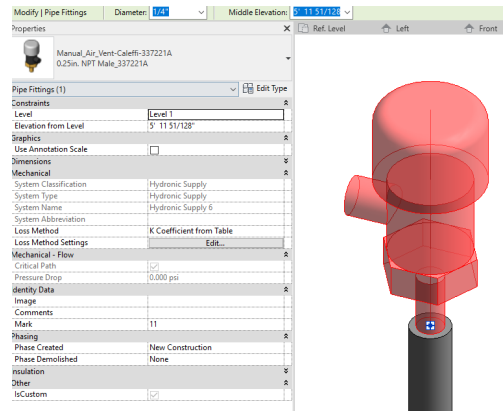


Figure 5 – The OBCaleffi 337221A Series Manual Air Vent families can be found under pipe accessories in the project browser and placed directly onto pipe end or fitting of the same size.

Schedule Creation

Within the type and instance properties dialogues, the Revit user will find useful information for scheduling purposes such as Type, Part Description, Part Number/Model, Family Version, Manufacturer, Series, & Product Page URL. The resulting Pipe Accessories schedule in your project will show counts/quantities of the OBCaleffi 337221A Series Manual Air Vent as well as separate quantities/counts of any separately purchased accessory products that do not come in box with the OBCaleffi 337221A Series Manual Air Vent

**For Technical Support call 1-414-338-6338, or
email techsupport.us@caleffi.com**

