



LEGIOMIX[®]evo

Advanced electronic mixing valve with connectivity

6003 series

www.caleffi.com




- Comprehensive range for application in systems with high flow rates
- Ball mixing valve
- Programmable thermal disinfection
- Connection to Caleffi Cloud for remote control
- Management in BMS setups using integrated ModBus or Bacnet
- Failsafe function in the event of electricity supply failure
- Recirculation pump management
- Three temperature probes: flow, recirculation and storage



CALEFFI
Hydronic Solutions




PRODUCT RANGE




CODE	CONNECTION	Kv (m³/h)
60035.	3/4"	8,4
60036.	1"	10,6
60037.	1 1/4"	21,2
60038.	1 1/2"	32,5
60039.	2"	41,0

Code completion (.)

1	230 V - 3-point (standard brass)
3	24 V - 0-10 V with failsafe
4	24 V - 3-point









CODE	CONNECTION	Kv (m³/h)
6003.6	DN 65	90,0
6003.8	DN 80	105,0

Code completion (.)

1	230 V - 3-point
3	24 V - 0-10 V with failsafe
5	24 V - 0-10 V without failsafe


TECHNICAL SPECIFICATIONS

Electric supply	230 V AC or 24 V AC
running power consumption	(9+6) VA threaded (9+10) VA flanged
Max. working pressure	10 bar
Thermal medium temperature range	5-100 °C
Adjustment temperature range	20-85 °C
Disinfection temperature range	40-85 °C
Protection class	IP 65 (actuator)

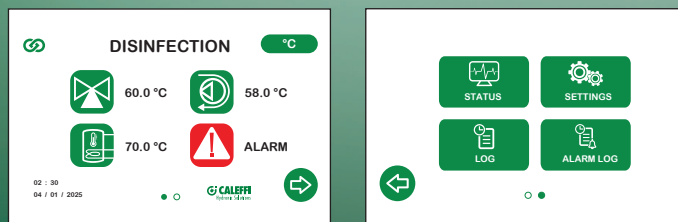
MONITORING AND DASHBOARD

LEGIOMIXevo can be used to manage all settings and to view temperature and disinfection logs directly via the regulator display. When the device is online, the Caleffi cloud can be accessed and a dedicated dashboard provides the option of viewing detailed graphs and tables, as well as managing all regulator settings.



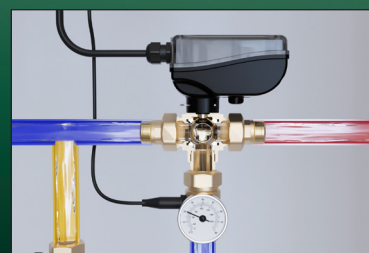
TOUCHSCREEN DISPLAY

The touchscreen display makes it easy and intuitive to adjust all regulator settings and to read the data required to ensure the system is working properly.



FAILSAFE FUNCTION

The Failsafe function built into specific actuators allows automatic closure of the hot line to avoid endangering the system and users in the event of a power failure.

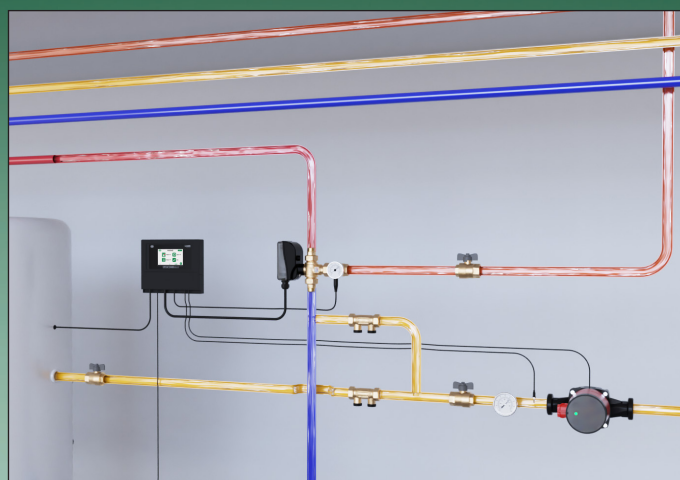


RECIRCULATION PUMP MANAGEMENT

The regulator can be used to set time bands for recirculation pump activation only when actually necessary, in order to optimise electricity and thermal energy consumption.



APPLICATION DIAGRAM



REFERENCE DOCUMENTATION

6003 series

- Tech. broch. 01428

CALEFFI
Hydronic Solutions

We reserve the right to make changes and improvements to our products and the related technical data in this publication, at any time and without prior notice. The website www.caleffi.com always has the most up-to-date version of the document, which should be used for technical verifications.

Caleffi S.p.A. S.R. 229 no. 25 · 28010 Fontaneto d'Agogna (NO) · Italy
Tel. +39 0322 8491 · Fax +39 0322 863305
info@caleffi.com · www.caleffi.com · © Copyright 2025 Caleffi

0368425EN