



Automatic water treatment unit

Code 580020

www.caleffi.com



- The automatic water treatment unit is used for filling heating and cooling systems within closed circuits, in compliance with the directives of the UNI 8065 and VDI 2035 standards.
- Can be configured with a range of cartridge technologies, allowing the unit to be used for both demineralisation and softening treatments.
- Reduces limescale formation and other phenomena which can cause heating system damage and malfunctions, to considerably extend the system life cycle.
- Can be equipped with an electronic controller that includes a volume meter and an electrical conductivity measuring cell.
- Complete with by-pass regulator upstream from the unit, which can be used to customise the final water hardness after softening.



CALEFFI
Hydronic Solutions

DEMINERALISATION TREATMENT

Disposable cartridges



Rechargeable cartridges



Volume	2.7 l	4.5 l	12 l	24 l
Max. flow rate:	2 l/min	4 l/min	15 l/min	22 l/min

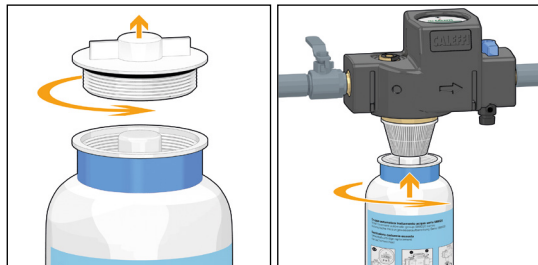
SOFTENING TREATMENT

Disposable cartridges

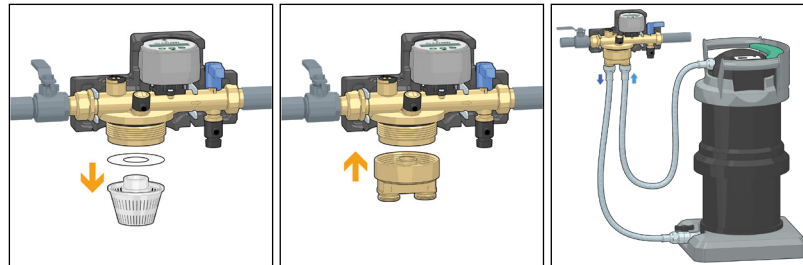


Volume	2.7 l	4.5 l
Max. flow rate:	2 l/min	4 l/min

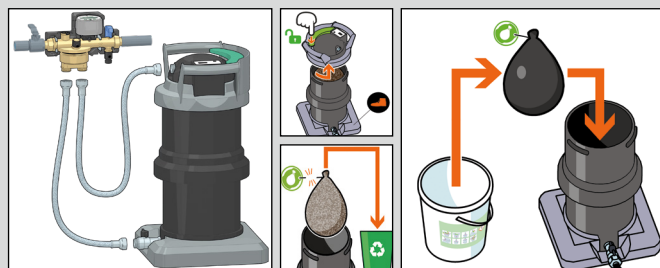
Disposable cartridge installation



Refillable cartridge installation

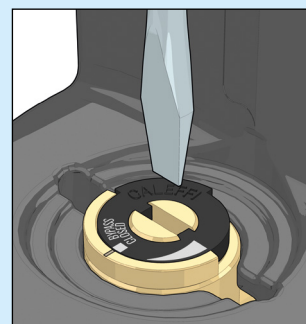


Rechargeable cartridge refilling



By-pass regulator

The device has a by-pass regulator, which is used during softening only to divert part of the medium so that it is not treated in the cartridge. This can be used to vary the water hardness at the unit outlet.



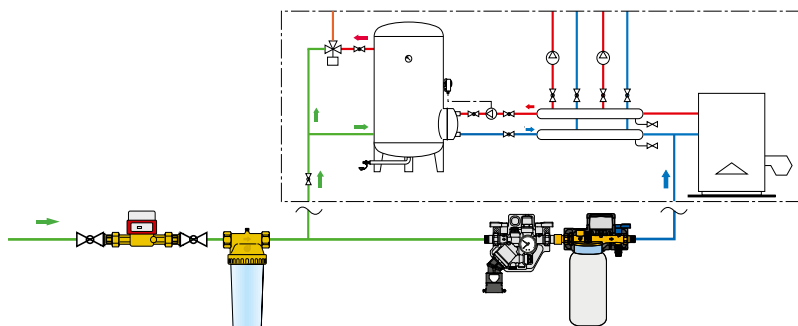
Electronic controller

The electronic controller serves to monitor the treatment parameters during execution. It consists of a volume meter and an electrical conductivity measuring cell built into the electronics. This allows the controller to generate an error message to notify precisely when the fitted cartridge is spent.



Technical specifications

Connections	1/2"
Max. working pressure	4 bar
Max. working temperature	30 °C
Kv	0.6



CALEFFI
Hydronic Solutions