

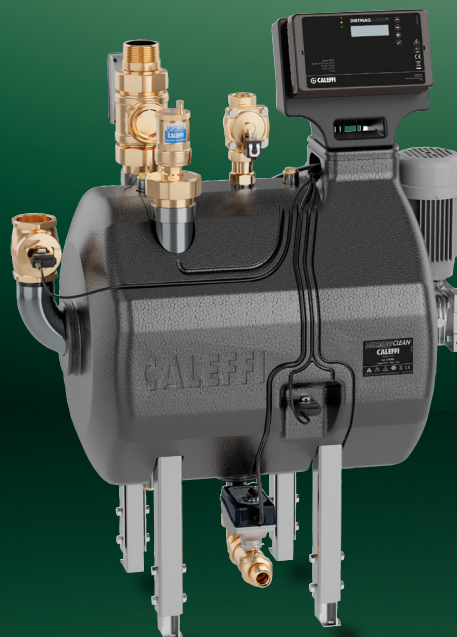
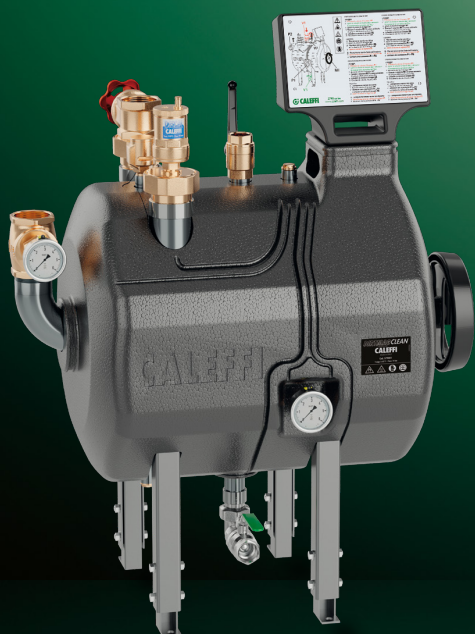


# DIRTMAGCLEAN®

## Dirt separator filter with magnet

5790 series

[www.caleffi.com](http://www.caleffi.com)



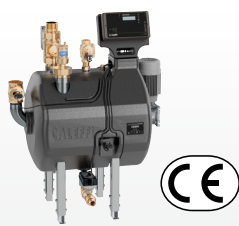
**PATENT PENDING**

- Used in heating systems controllers to remove dirt and impurities from the circuit progressively and completely.
- The filter elements can be cleaned completely automatically (code 5790000) or manually (code 5790001).
- The filter mesh progressively blocks particles. At the same time, ferrous particles are separated out by the magnets on the surface of the filter element.
- The self-cleaning version is supplied with an electronic regulator that can be controlled remotely by a BMS with the MODBUS-RTU protocol.
- Flexible installation in-line or in by-pass, to suit the requirements of the installation.
- Pressure drops are kept to a minimum due to the large area of the filter mesh.



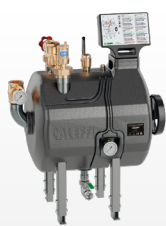
**CALEFFI**  
Hydronic Solutions

## PRODUCT RANGE



Self-cleaning

CODE 579000



Manual version

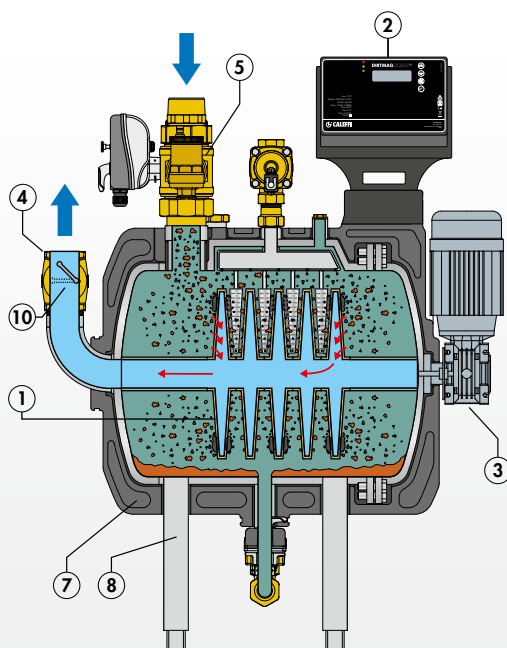
CODE 579001

## TECHNICAL SPECIFICATIONS

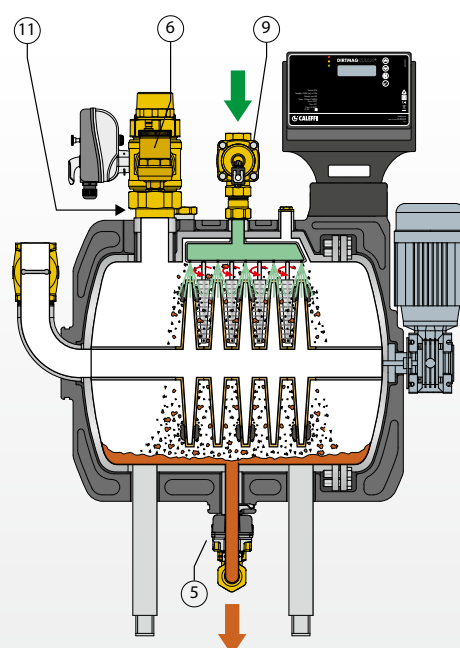
Body material	stainless steel AISI 304
Max. working pressure	10 bar
Temperature range	5–85°C
Recommended flow rate	5–20 m³/h
Kv	45 m³/h
Particle separation capacity	up to 2 µm

## OPERATION AND COMPONENTS

- 1) Filter unit with magnets
- 2) Controller
- 3) Motorised self-cleaning unit
- 4) Pressure and temperature sensors
- 5) Automatic motorised valves
- 6) Air vent
- 7) Insulation
- 8) Adjustable feet
- 9) Solenoid operated valve
- 10) Check valve
- 11) Vacuum breaker

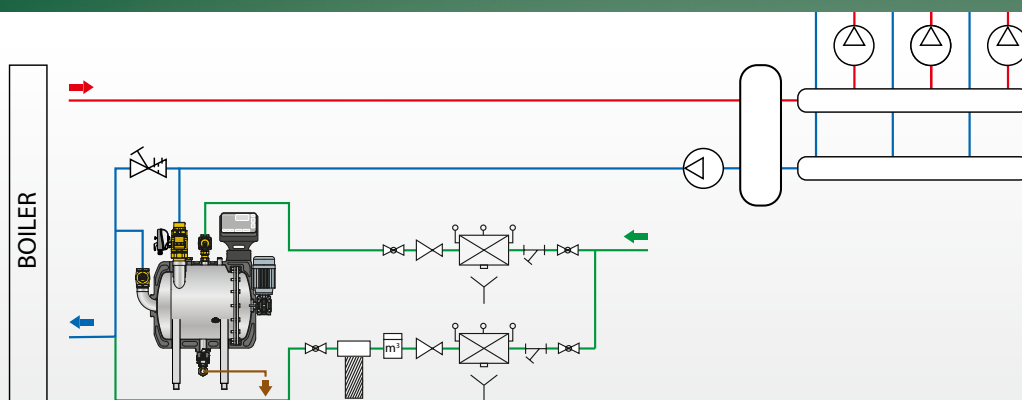


Normal working



Automatic cleaning

## APPLICATION DIAGRAM



**CALEFFI**  
Hydronic Solutions