

# DYNAMICAL® Pre-assembled distribution manifold

## 665 series

[www.caleffi.com](http://www.caleffi.com)



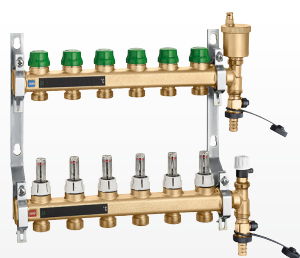
**PCT**  
INTERNATIONAL  
APPLICATION  
PENDING

- Maintains the flow rate of the individual circuit at a constant value regardless of the working conditions of the rest of the system.
- The delivery manifold is equipped with a flow indicator.
- The return manifold is equipped with a DYNAMICAL® adjustment valve which ensures automatic dynamic balancing and flow regulation regardless of pressure variation.
- Ideally suited to upgrading underfloor heating systems.
- The adjustment valve, combined with the electro-thermal control, controls the flow rate according to the room temperature.
- Upgrades existing installations to provide previously unavailable thermal comfort and energy saving.



**CALEFFI**  
Hydronic Solutions

## PRODUCT RANGE

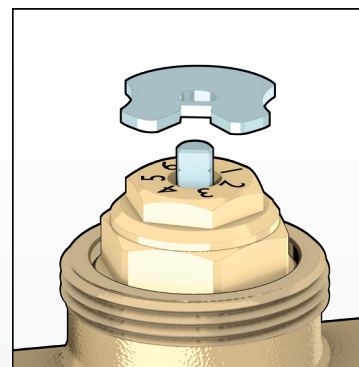


CODE	NO. OF OUTLETS
6656D1	x 4
6656E1	x 5
6656F1	x 6
6656G1	x 7
6656H1	x 8
6656I1	x 9
6656L1	x 10
6656M1	x 11
6656N1	x 12

## DYNAMICAL FLOW ADJUSTMENT VALVES

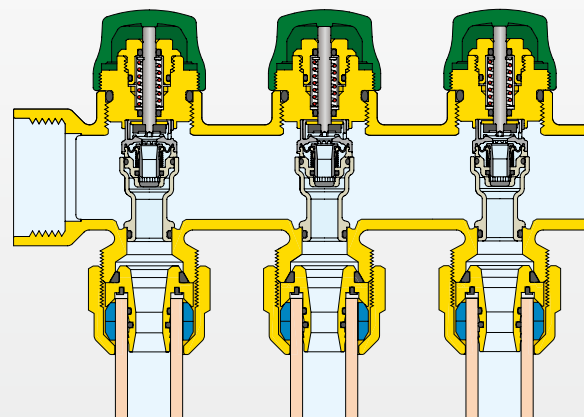
The return manifold is equipped with DYNAMICAL® flow adjustment valves, which allow the automatic dynamic balancing and pressure-independent adjustment of the thermal medium in the individual circuits of underfloor heating systems.

To set the flow rate, simply rotate the control stem to the desired setting by its collar.



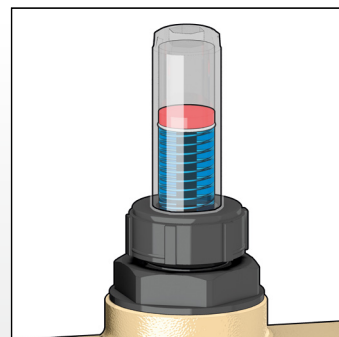
## TECHNICAL SPECIFICATIONS

Medium	water, glycol solutions
Max. glycol percentage	30%
Max. working pressure	6 bar
Temperature range	5–60 °C
Flow rate regulation range	25–150 l/h
Main connection	1"
Outlet connections	3/4" M
Distance between outlet centres	50 mm



## FLOW METERS

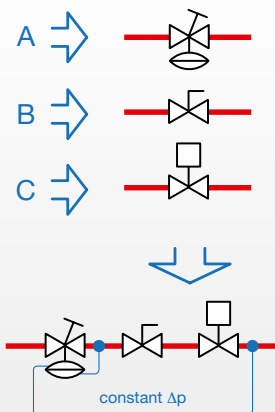
The delivery manifold is equipped with flow meters to check that fluid is flowing through the circuit. They may also be used to shut off flow to the circuit.



## OPERATING PRINCIPLE

The DYNAMICAL® valve allows the automatic dynamic balancing and pressure-independent adjustment of the thermal medium in the individual circuits of underfloor heating systems.

- Differential pressure regulator, which automatically cancels the effect of the pressure fluctuations typical of variable flow rate systems and prevents noisy operation.
- Device for pre-setting flow rate, which allows direct setting of the maximum flow rate value, thanks to the combination with the differential pressure regulator.
- Flow rate control depending on the ambient temperature, thanks to the combination with an electronic or electro-thermal controller. The flow rate control is optimised because it is pressure-independent.



**CALEFFI**  
Hydronic Solutions