



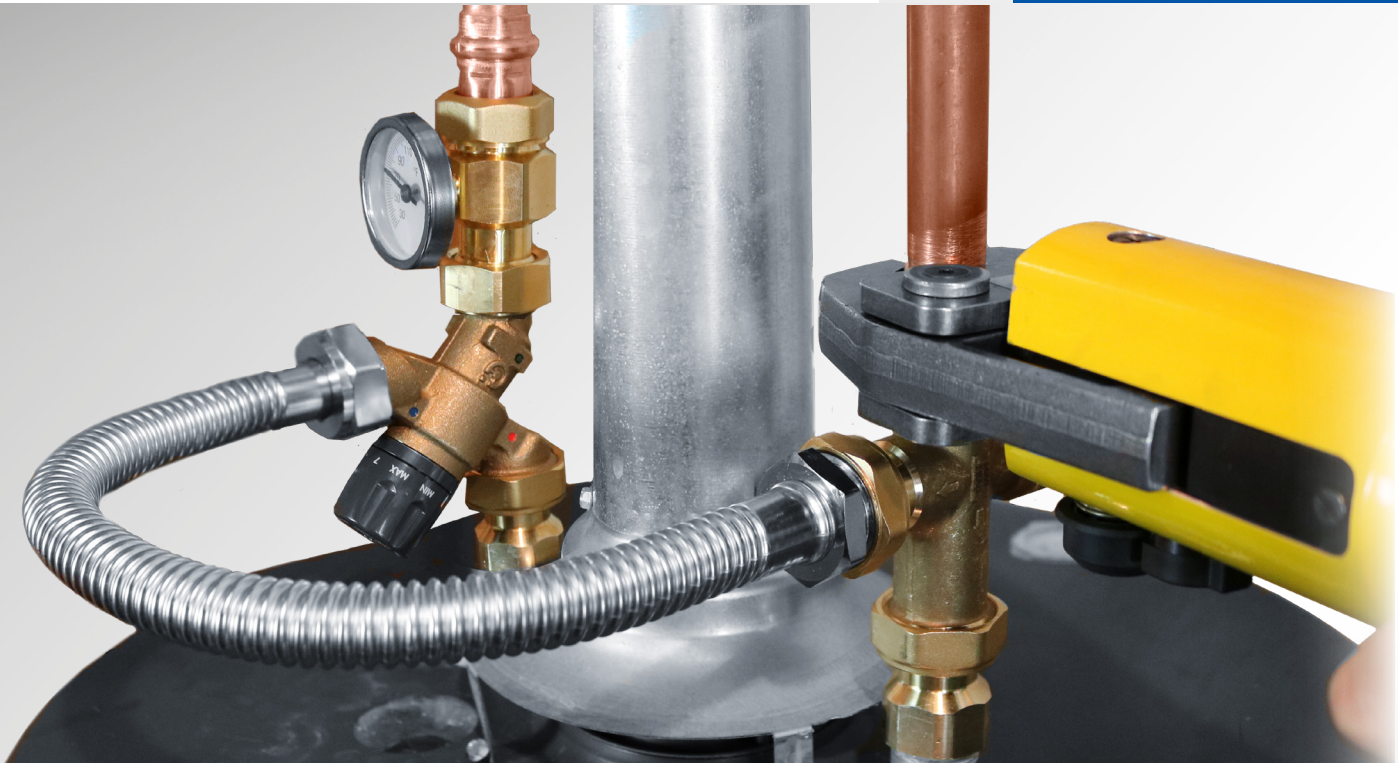
TankMixer™

THERMOSTATIC MIXING VALVE QUICK CONNECT KIT

CALEFFI
Hydronic Solutions



Protecting the system to protect your water



PRODUCT FEATURES

- **Complete quick-connect kit:**
Everything needed for quick installation, including optional press fittings. Includes cold water cross with check valve to prevent cross flow.
- **Accurate low flow:**
0.5 GPM minimum flow for stable control for today's high efficiency fixtures.
- **Optional temperature gauge:**
Local temperature indication. Convenient dry-well design.
- **Anti-scale polymer materials:**
Prevents scaling on internal sliding surfaces, assuring stable temperature control and long life.
- **Tight hot water close-off:**
Prevents recirculation temperature creep. Improves pump's aquastat service life.
- **Integral recirculation inlet port:**
For connecting to hot water recirculation loop. 1/2" NPT plug included.

The Perfect Mix

The Caleffi TankMixer™ is a perfect mixing valve solution to maximize the capacity of modern high efficiency water heaters and minimize installation time. It comes packaged in a kit with everything needed for fast installation including union fittings and industry-exclusive press connections.

PRODUCT RANGE - TankMixer

CONNECTION TO TANK	CONNECTION TO SYSTEM	CODE	
		WITHOUT MIXED OUTLET TEMPERATURE GAUGE	WITH MIXED OUTLET TEMPERATURE GAUGE
¾" FNPT	¾" MNPT	520500AX	520510AX
	¾" PRESS	520506AX	520516AX
	¾" SWEAT	520509AX	520519AX

*Kit includes mixing valve, cold water cross with check valve included, 18 inch large ID flexible pipe and recirculation port plug (½").



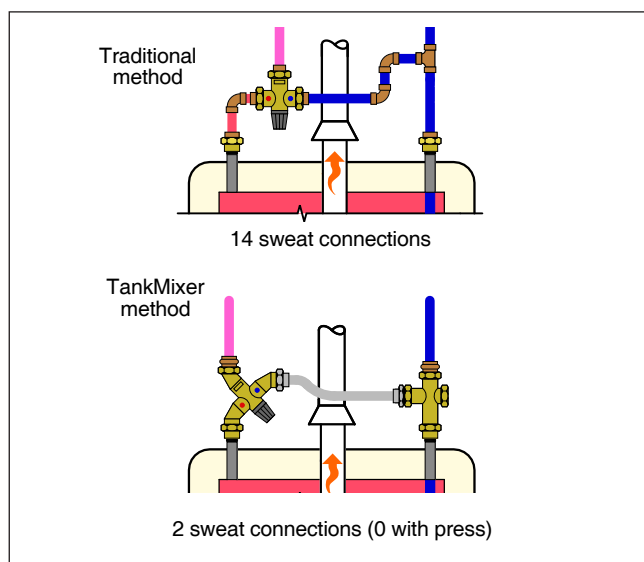
NSF/ANSI 372



PERFORMANCE

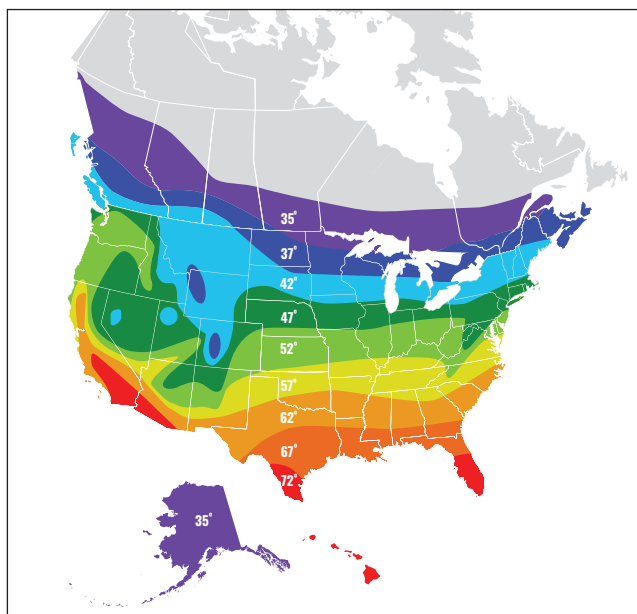
MAX. WORKING PRESSURE	150 psi (10 bar)
SETTING TEMPERATURE RANGE	95 — 150°F (35-65°C)
MAX. HOT WATER INLET TEMP.	195°F (90°C)
MIN. FLOW FOR STABLE PERFORMANCE	0.5 GPM (2 L/min)

INSTALLATION COMPARISON



Caleffi Partner:

GETTING MORE HOT WATER



Determine your ground water temperature from this map. This is the supply water temperature to your water heater.

Then, using the table below, determine the potential increased capacity of hot water by incorporating a TankMixer™ on your water heater.

For example, in Atlanta, GA, setting the water heater to 160°F, increases capacity by 69%. This equates to 84 gallons for a 50 gallon heater.

The TankMixer works great to extend the capacity of your existing or new water heater.

% Increase in Water Heater Capacity*									
Storage Temp	Incoming Water Temperature (°F)								
	35°	37°	42°	47°	52°	57°	62°	67°	72°
130°F	12	12	13	14	15	16	17	19	21
140°F	24	24	26	27	29	32	34	38	42
150°F	35	36	38	41	44	48	52	57	63
160°F	47	48	51	45	59	63	69	75	83
170°F	59	60	64	68	74	79	86	94	104
180°F	71	72	77	82	88	95	103	113	125

*baseline 120°F



CALEFFI
Hydronic Solutions

03616-20.1 NA

WE RESERVE THE RIGHT TO CHANGE OUR PRODUCTS AND THEIR RELEVANT TECHNICAL DATA, CONTAINED IN THIS PUBLICATION, AT ANY TIME AND WITHOUT PRIOR NOTICE.

Caleffi North America, Inc.
sales@caleffi.com · www.caleffi.com
© Copyright 2020 Caleffi North America, Inc.