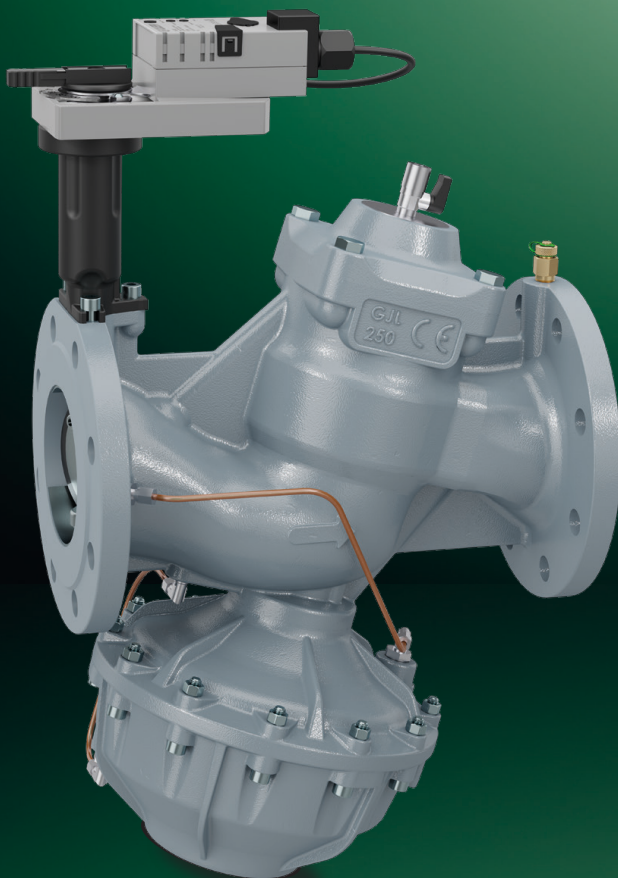




Pressure independent control valve (PICV)

145 – 146 series

www.caleffi.com



FLOWMATIC® threaded version

- High working pressure PN 25 and broad working Δp range.
- Flow rate pre-adjustment without reducing the stroke.
- The modulating actuators always make use of 100% of the stroke for the flow rate regulation.
- Available with or without pressure test ports for checking the system operating parameters.

Flanged version

- Wide adjustable flow rate range up to 160 m³/h.
- Rotational proportional actuator.
- The shape of the obturator ensures linear regulation.
- Complete with built-in pressure test ports for direct flow rate measurement.



TECHNICAL SPECIFICATIONS

FLOWMATIC® THREADED VERSION

- PN 25
- High flow rate accuracy:
± 5 % of the set point
- LEAKAGE: class V in accordance with EN 60534-4
- 100 % of the stroke at each pre-setting:
the modulation makes use of the whole obturator stroke

FLANGED VERSION

- PN 16
- High flow rate accuracy:
± 10 % of the set point
- Built-in pressure test ports for direct flow rate measurement
- Rotational proportional actuator

PRODUCT RANGE

FLOWMATIC®



145 series dezincification resistant alloy body

	Flow rate range (m³/h)	Connection
H20	0.02–0.20	1/2" - 3/4" - 1"
H40	0.08–0.40	3/4" - 1"
H80	0.08–0.80	3/4" - 1"
1H2	0.12–1.20	1"
1H8	0.18–1.80	1 1/4"
3H0	0.30–3.00	1 1/4"
3H7	0.37–3.70	1 1/4"

Available with or without pressure test ports

Max. working pressure	25 bar
Δp range	25–400 kPa
Working temperature range	-20–120 °C



CODE	Use
CBN145437	DN 15/DN 20
CBN145667	DN 25



145 series cast iron body

Flow rate range (m³/h)	DN	Connection
2.9–9.3	40	2" M
5.1–14.8	50	2 1/2" M

25 bar
30–600 kPa
-10–120 °C



Series 146 cast iron body

Flow rate range (m³/h)	DN
6–26	65
8–36	80
16–82.5	100
20–125	125
27–160	150

16 bar
30–400 kPa
-10–120 °C



CODE	145013	145019	145018	656524	656502 656504	145017	146025
Type	Proportional actuator	Proportional actuator	Proportional actuator with fail-safe	Proportional thermo-electric actuator	Thermo-electric actuator	Rotational proportional actuator	Rotational proportional actuator
Control signal	0–10 V	0–10 V	0–10 V	0–10 V	ON/OFF	2–10 V	2–10 V
Electric supply	24 V	24 V	24 V	24 V	230 V 24 V	24 V	24 V
Feedback signal	0–10 V	0–10 V	0–10 V	0–10 V	-	2–10 V	2–10 V

REFERENCE DOCUMENTATION

- 145 series - Tech. broch. 01262, instruction sheet H0005644
146 series - Instruction sheet H0000857

CALEFFI
Hydronic Solutions

We reserve the right to make changes and improvements to our products and the related technical data in this publication, at any time and without prior notice.
The website www.caleffi.com always has the most up-to-date version of the document, which should be used for technical verifications.

Caleffi S.p.A. S.R. 229 no. 25 · 28010 Fontaneto d'Agogna (NO) · Italy
Tel. +39 0322 8491 · Fax +39 0322 863723
info@caleffi.com · www.caleffi.com · © Copyright 2024 Caleffi