



DIRTMAG[®]PLUS

Multifunction device in technopolymer with dirt separator and strainer

Serie 5453

www.caleffi.com



PCT
INTERNATIONAL
PATENT
APPLICATION

- The combined action of strainer and dirt separator guarantees maximum efficiency of impurity separation inside the system from the first pass.
- Eliminates magnetite present in the closed circuit, preserving the magnetic rotors of the circulators.
- Very fast and effective maintenance thanks to the bi-directional opening of the strainer, the magnetic ring that is easy to remove and the wide drain cock.
- The dirt separator, positioned upstream of the strainer, prevents an increase in head losses due to gradual clogging.
- Can be installed on horizontal or vertical pipes thanks to the adjustable fitting.
- Strainer cartridge fitted with fine-mesh strainer for first pass cleaning and with larger mesh strainer for ongoing operation.



CALEFFI
Hydronic Solutions

PRODUCT RANGE



CODE	CONNECTION
545375	3/4" F
545376	1" F
545377	1 1/4" F
545372	Ø 22
545373	Ø 28

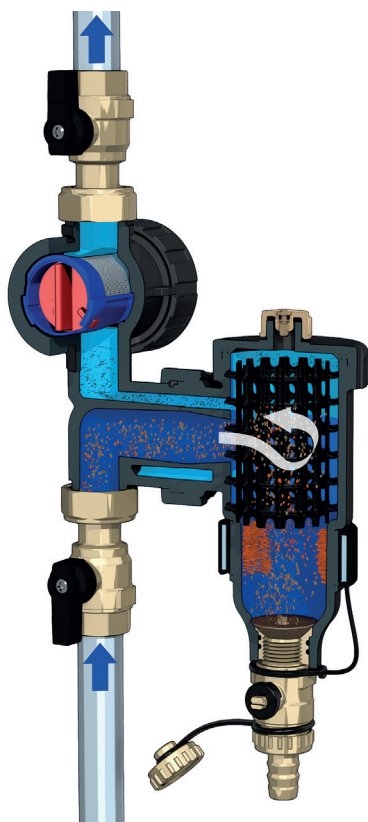
TECHNICAL SPECIFICATIONS

Working temperature range	0-90 °C
Max. working pressure	3 bar
Medium	water, glycol solutions
Max glycol	30 %

OPERATING PRINCIPLE

The multifunction device is made up of a dirt separator and a cartridge strainer arranged in series.

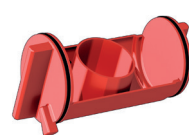
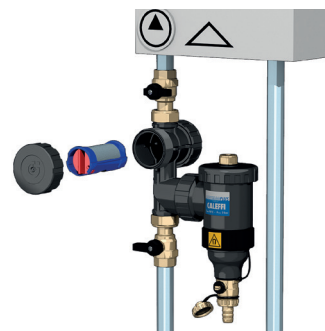
The dirt separator separates the impurities present in the water through the action of its internal element and retains the ferrous particles thanks to the action of two magnets. The cartridge strainer separates the impurities through mechanical selection of the particles based on their size through a special metal filtering mesh. Maximum efficiency of particle separation at the first pass is thereby obtained.



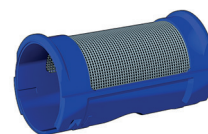
CARTRIDGE STRAINER

The (blue) strainer downstream of the dirt separator, which is fitted with a special filtering mesh, blocks all particles that remain in circulation, cleaning the pipes at the first pass very effectively, to protect the generator and the system components. The strainer is also fitted with a second (grey) cartridge fitted with a larger filtering mesh, to be used during ongoing phase, after the first passage.

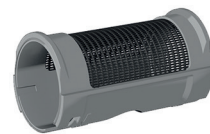
The large capacity strainer cartridge is made of two parts: an outer body with stainless steel mesh and an internal impurity collector, appropriately shaped.



Dirt collector

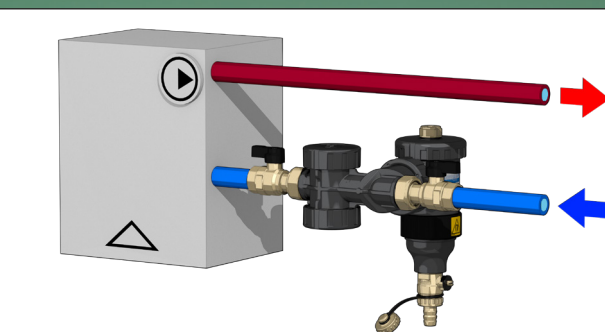
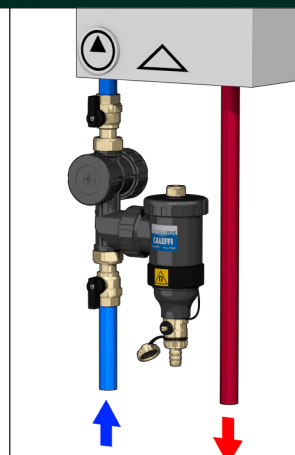
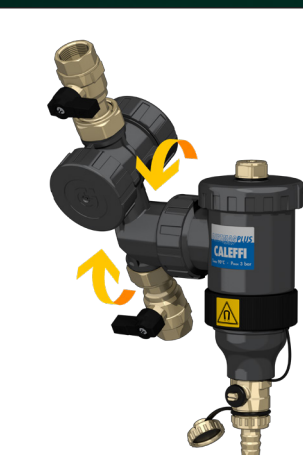


First passage strainer
Mesh size Ø = 0,30 mm



Maintenance strainer
Mesh size Ø = 0,80 mm

INSTALLATION



REFERENCE DOCUMENTATION

5453 series

- Technical brochure 01258

CALEFFI
Hydronic Solutions

WE RESERVE THE RIGHT TO CHANGE OUR PRODUCTS AND THEIR RELEVANT TECHNICAL DATA, CONTAINED IN THIS PUBLICATION, AT ANY TIME AND WITHOUT PRIOR NOTICE.

Caleffi S.p.A. S.R. 229 n. 25 · 28010 Fontaneto d'Agogna (NO) · Italy
Tel. +39 0322 8491 · Fax +39 0322 863723
info@caleffi.com · www.caleffi.com · © Copyright 2024 Caleffi