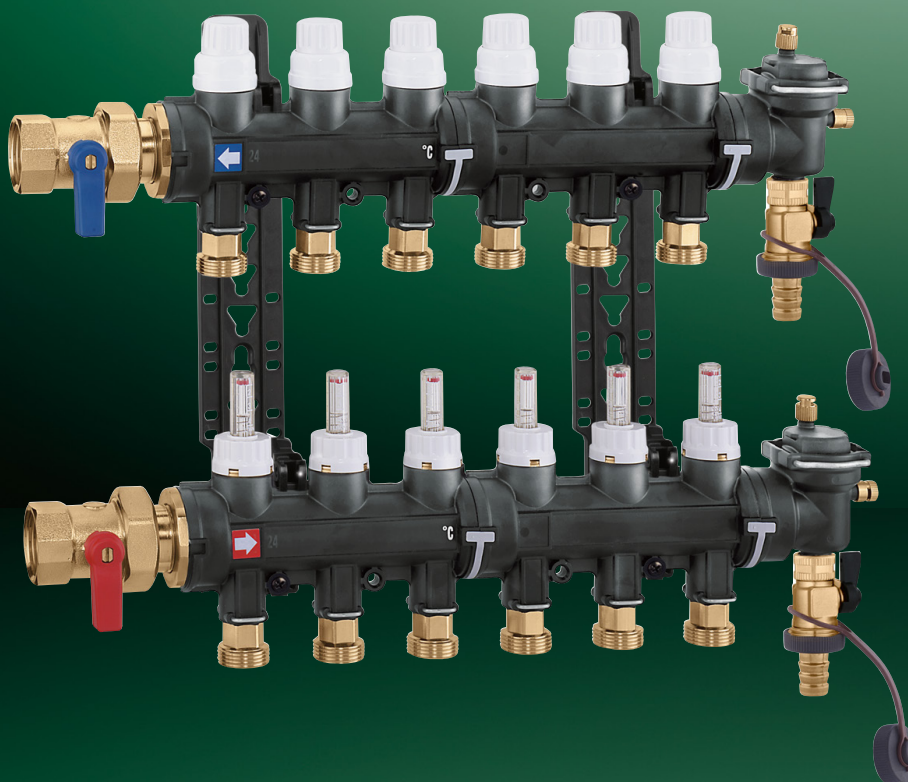


Composite distribution manifolds

671 series

www.caleffi.com



- Manifold made of composite material specifically designed for control and distribution of the medium in underfloor radiant panel systems.
- Made of specific technopolymer to guarantee high resistance to plastic deformation and consistent performance with temperature variations.
- Flow manifold complete with flow meters with in-built regulating valves and return manifold complete with shut-off valves fitted for thermo-electric actuators.
- Manifold end fittings complete with automatic air vent and fill/drain cock.
- Outlet connections for the individual circuits are made for the use of a special quick-fit coupling adapter, which is easy.
- Temperature gauges are available as an accessory, with push-fit on pipe, to measure the actual temperature of the medium in the return circuit.



CALEFFI
Hydronic Solutions

PRODUCT RANGE

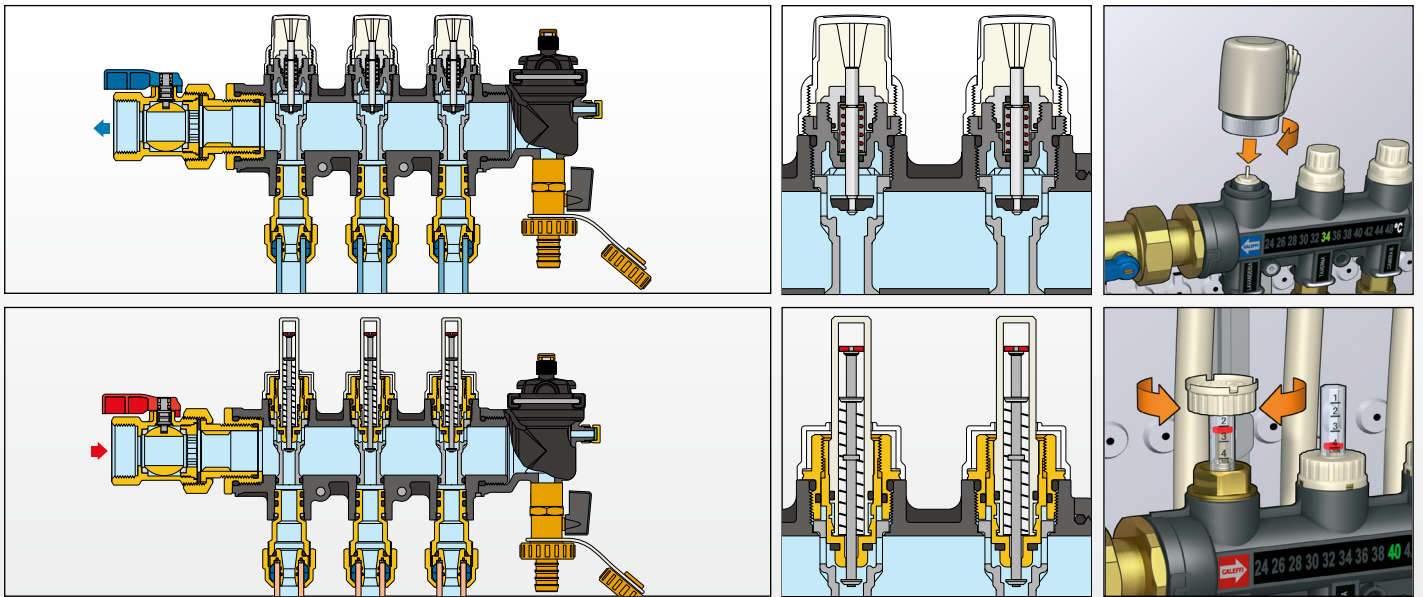


CODE	CONNECTION	NO. OUTLETS	OUTLETS
6716C1	1" F	x 3	3/4" M
6716D1	1" F	x 4	3/4" M
6716E1	1" F	x 5	3/4" M
6716F1	1" F	x 6	3/4" M
6716G1	1" F	x 7	3/4" M
6716H1	1" F	x 8	3/4" M
6716I1	1" F	x 9	3/4" M
6716L1	1" F	x 10	3/4" M
6716M1	1" F	x 11	3/4" M
6716N1	1" F	x 12	3/4" M
6716O1	1" F	x 13	3/4" M
6716P1	1" F	x 14	3/4" M

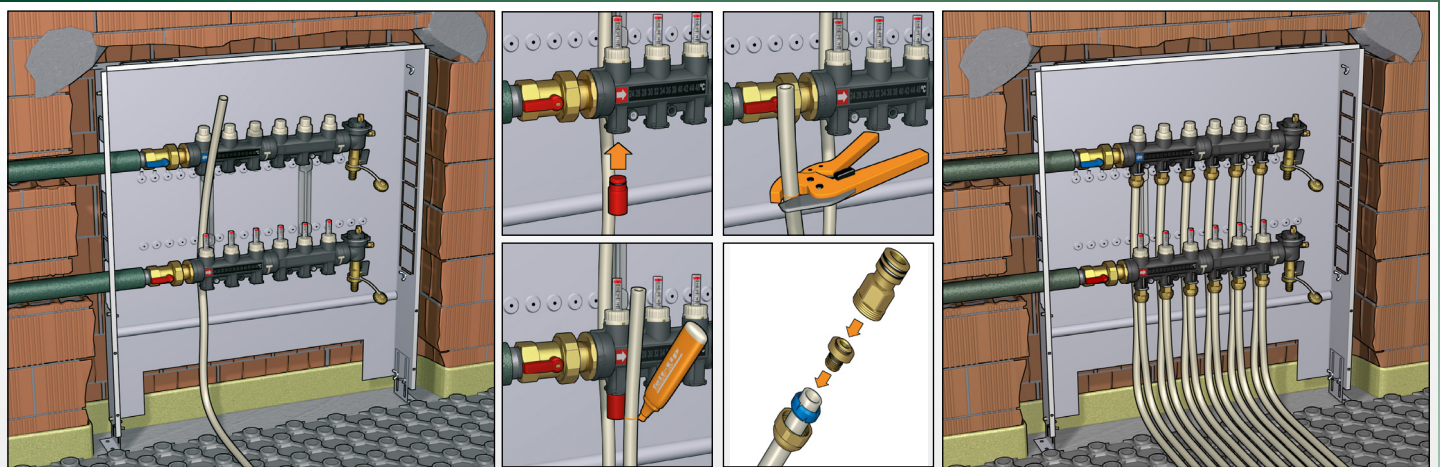
PERFORMANCE

MEDIUM	water, glycol solutions
MAX. GLYCOL	30%
MAX. WORKING PRESSURE	4 bar
MAX. COLD HYDRAULIC TEST PRESSURE	6 bar
WORKING TEMPERATURE RANGE	5 – 60°C
FLOW METER SCALE	1 – 4 l/minute
MAIN CONNECTION CENTRE DISTANCE	255 mm
OUTLETS CENTRE DISTANCE	50 mm

CONSTRUCTION DETAILS



INSTALLATION



CALEFFI
Hydronic Solutions

0351219GB

WE RESERVE THE RIGHT TO CHANGE OUR PRODUCTS AND THEIR RELEVANT TECHNICAL DATA, CONTAINED IN THIS PUBLICATION, AT ANY TIME AND WITHOUT PRIOR NOTICE.

Caleffi S.p.A. S.R. 229 n. 25 · 28010 Fontaneto d'Agogna (NO) · Italy
Tel. +39 0322 8491 · Fax +39 0322 863723
info@caleffi.com · www.caleffi.com · © Copyright 2019 Caleffi