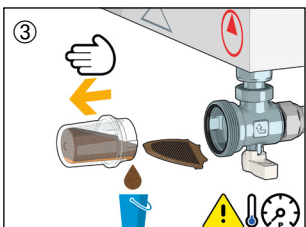
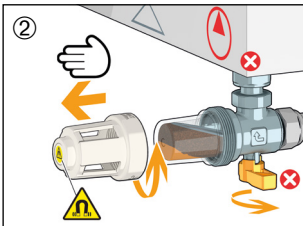
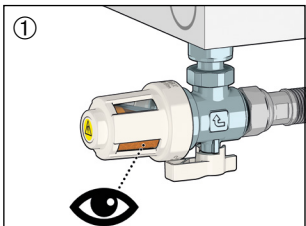


MAINTENANCE

The transparent windows make it extremely simple to check if the component requires maintenance.

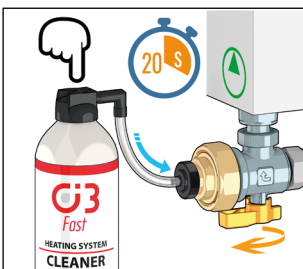
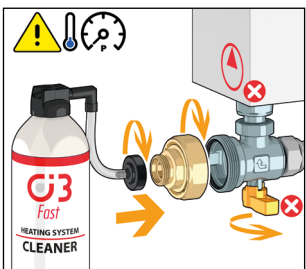


Cleaning can be done by following a few simple steps.



ADDITION OF ADDITIVES

The Caleffi XS dirt separator filter can be used as a point for adding chemical additives to the system, thanks to the flushing kit.



OUR RANGE



Under-boiler magnetic filter
code 545900
3/4" M x 3/4" F captive nut



Flushing kit and addition of chemical additives.
cod. F0001037



C3 FAST CLEANER
code 570915
Removes dirt, limescale and debris.
Dosage:
0,4 litres of product every 150 litres of water in the system.



C1 FAST INHIBITOR
code 570916
Protects against corrosion and limescale deposits.
Dosage:
0,4 litres of product every 150 litres of water in the system.

Retailer stamp

Caleffi S.p.A.
S.R. 229, 25
28010 Fontaneto d'Agogna (NO)
Tel. +39 0322 8491
Fax +39 0322 863723
info@caleffi.com

www.caleffi.com

CALEFFI
Hydronic Solutions



**Under-boiler
magnetic filter
5459 Series - Caleffi XS**

The most compact magnetic dirt separator filter

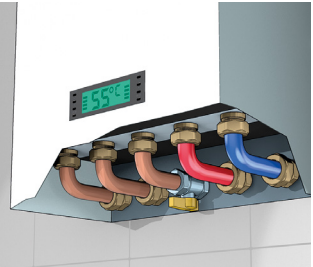


www.caleffi.com

CALEFFI
Hydronic Solutions

THERMAL SYSTEM RETROFIT...

...due to a strong legislative incentive, mainly involves replacing existing condensing boilers and installing thermostatic valves. Apart from these operation, the installer has little chance to act on system components already installed, such as pipes and metal outlet systems, which lead to a continue release of ferrous and non-ferrous impurities.

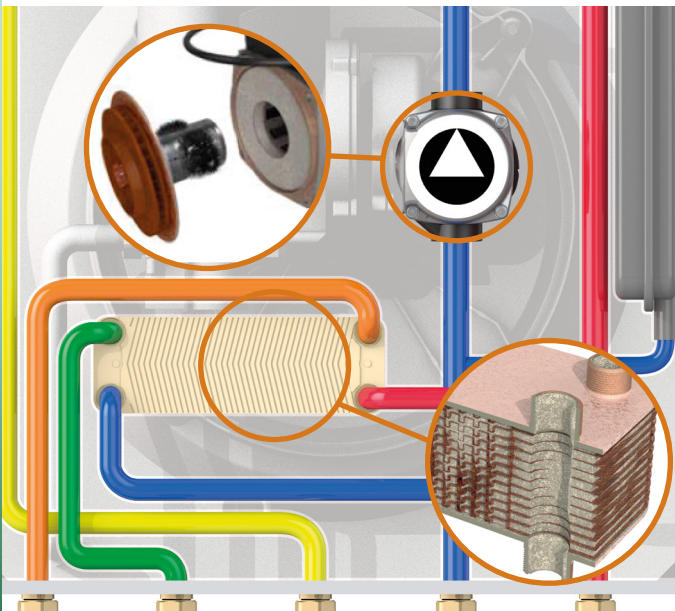


Impurities can have extremely detrimental effects on wall-mounted condensing boilers, primarily affecting:

- Water/flue gas domestic heat exchangers
- Variable speed circulators

Usually, the boiler and the domestic system can be protected by installing a dirt separator.

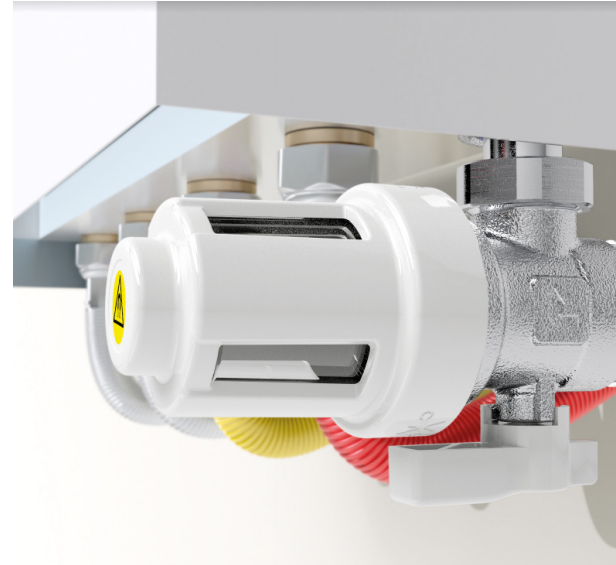
This type of device requires a specific space, which is not always available.



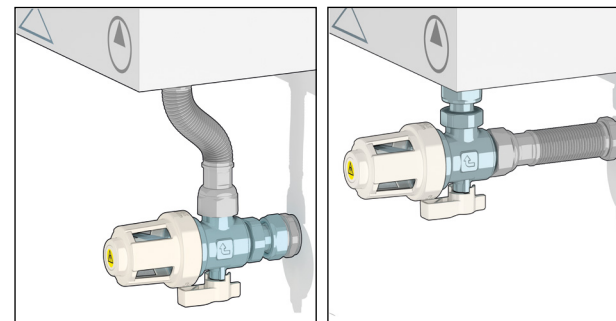
UNIVERSAL INSTALLATION

The Caleffi XS under-boiler magnetic dirt separator filter solves all the problems related to protecting the boiler and the thermal system, with such a compact design that has no equal on the market.

Its very small dimensions make it suitable for all generator types, whether installed in new or retrofit systems.



It can be connected directly to the boiler with a hose to the wall, or installed directly on the wall with a hose to the boiler.



HIGH AESTHETIC LEVEL



The refined white and chrome lines of the Caleffi XS dirt separator filter ensure that it blends perfectly with the home environment in where it is installed, without harming its aesthetics.

OPERATING PRINCIPLE

Magnetic dirt separator filter operation is based on three basic principles:

- the mechanical filtration provided by the steel mesh, which captures the impurities
- the magnetic field, which separates ferrous particles
- a large chamber with a decantation zone, which allows dirt to settle.

The chamber has transparent windows, allowing the user to check if the internal elements need to be cleaned.

