

# Vacu-Stop™ Vacuum relief valve

## 304 series



01402/23 NA



### Function

Vacu-Stop™ vacuum relief valves automatically allow air to enter into the piping system to prevent vacuum conditions that could siphon the water from the system and damage water heater/tank equipment. VRVs are suitable for water and low pressure steam service and are ideal for use in water heaters and supply tanks, table top heaters, jacketed steam kettles, unit heaters, low pressure steam systems, and steam coil heaters. Complies with ANSI Z21.22 and CSA 4.4 Relief Valves for Hot Water Supply Systems.

NSF/ANSI/CAN 372  
NSF/ANSI/CAN 61



### Product range

304 series Vacu-Stop vacuum relief valve

connections: 1/2" and 3/4" NPT male

### Technical specifications

#### Materials

Body: DZR low-lead brass CW724R  
 Top: glass fiber reinforced nylon PA6G30  
 Cover plate: acrylonitrile butadiene styrene  
 Cartridge, check: polyphenylsulfone  
 Spring: stainless steel ISO 6931-1 (4310-301-00)  
 Washer: silicon 240/T

#### Performance

Medium: water, low pressure steam  
 Maximum working pressure (water): 200 psig (14 bar)  
 Maximum working pressure (steam): 15 psig (1 bar)  
 Working temperature range: 32 to 250°F (0 to 120°C)  
 Vacuum relief opening pressure (opening point): 0.3" Hg (1 kPa) vacuum  
 Relief capacity: 4.5 cfm @ 2" Hg (130 lpm @ 7 kPa) vacuum

Complies with ANSI Z21.22/CSA 4.4 and NSF/ANSI/CAN 61 and NSF/ANSI/CAN 372, Drinking Water System Components-Lead Content Reduction of Lead in Drinking Water Act, California Health and Safety Code 116875 S.3874, Reduction in Drinking Water Act, Vermont Act 193 - The Lead in Plumbing Supplies Law and Maryland's Lead Free Law HB.372, as certified by ICC-ES.

#### Installation:

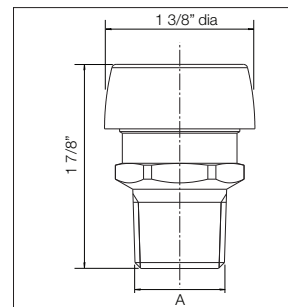
Install the Caleffi 304 Series Vacu-Stop vacuum relief valve in the cold water supply line at or above the highest point in the tank, vertically in the upright position. The illustration below shows a typical and correct position when the valve is installed on a water heater tank. The valve opens at a vacuum of 0.3" mercury column.

When installing the vacuum relief valve on a low pressure steam heating system, use a pigtail.

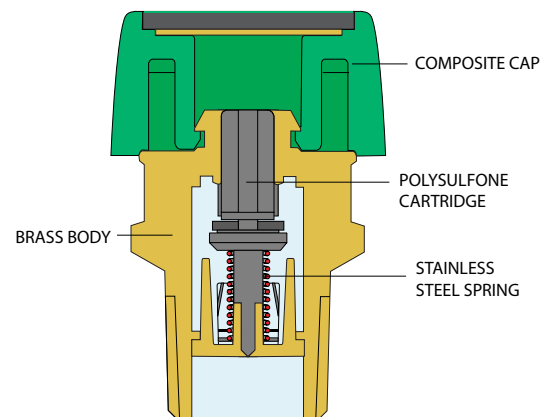
Caution: DO NOT install an isolation valve in between the water supply and the vacuum relief valve.

When installing the vacuum relief valve, make sure not to over-tighten the connection. Over time, a failure can occur with subsequent water leakage causing damage.

### Dimensions

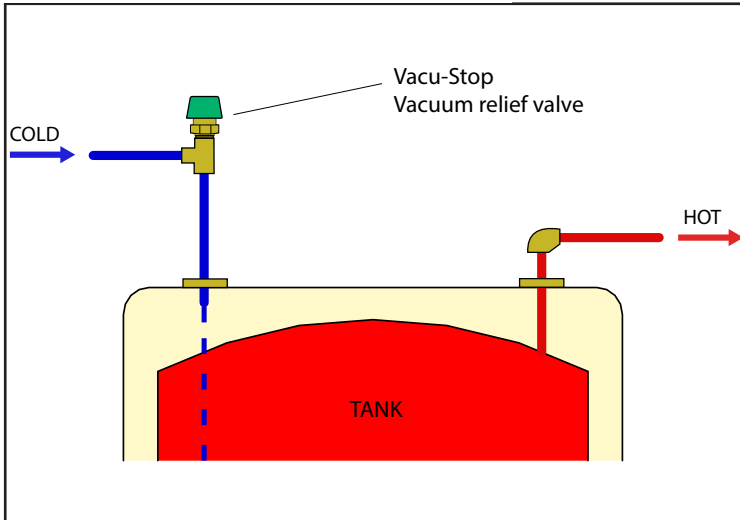


Code	A	Wt. (lb/kg)
<b>NPT male threaded</b>		
304040A	1/2"	0.8/0.4
304050A	3/4"	0.8/0.4

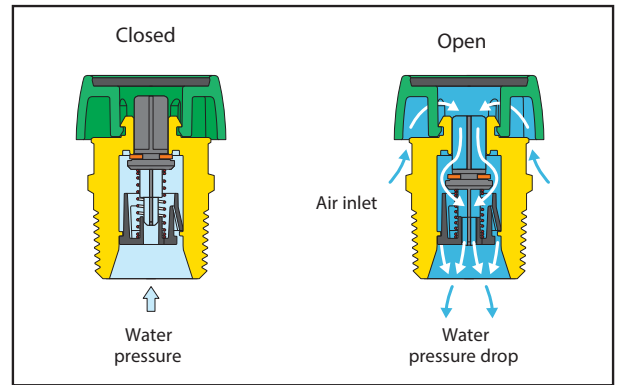


**Application diagrams**

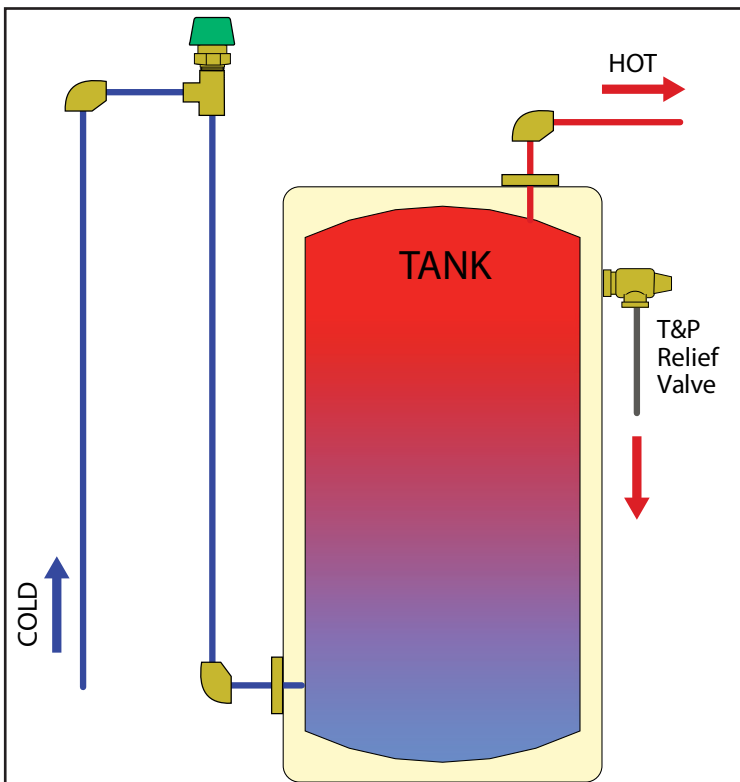
**Top connection water heater tank**



**Principle of Operation:**



**Bottom connection water heater tank**



Find us in

**MasterSpec**<sup>®</sup>

a product of The American Institute of Architects

<https://get.caleffi.info/specpoint>



find BIM Revit files and system templates at  
<https://bim.caleffi.com/en-us>

**304 series**

Vacuum relief valve. Threaded connections NPT male, connection sizes 1/2 and 3/4 inch. Dezincification resistant low-lead brass CW724R body (< 0.25% lead content) certified and listed by ICC-ES to NSF/ANSI/CAN 372, file PMG-1360. Complies with ANSI Z21.22/CSA 4.4. PPSU cartridge, check. Stainless steel spring. Silicom 240/T Washer. PA6G30 Top. ABS Cover plate. Water and low pressure steam. Maximum working pressure (water) 200 psig (14 bar). Maximum working pressure (steam) 15 psig (1 bar). Working temperature range 32 to 250°F (0 to 120 °C). Vacuum relief opening pressure 0.3" Hg (1 kPa) vacuum. Relief capacity 4.5 CFM @ 2" Hg (130 lpm @ 7 kPa) vacuum.

We reserve the right to make changes and improvements to the products and related data in this publication, at any time and without prior notice. The technical brochure on [www.caleffi.com](http://www.caleffi.com) always has the most up-to-date version of the document, which should be used for technical verification.



Caleffi North America, Inc.  
 3883 W. Milwaukee Road, Milwaukee, WI 53208  
 Tel: 414-238-2360 · Fax: 414-238-2366  
 Technical Support: 414-338-6338 / [techsupport.us@caleffi.com](mailto:techsupport.us@caleffi.com)  
[sales@caleffi.com](mailto:sales@caleffi.com) · [www.caleffi.com](http://www.caleffi.com)  
 © Copyright 2023 Caleffi North America, Inc.