

Expansion group for hot water storage heaters

528 series



Function

These expansion groups are used to protect hot water storage heaters in domestic water systems.

They are composed of various components that perform the following functions:

- shut-off, to isolate the mains system for maintenance and checks on the boiler circuit.
- anti-pollution, to prevent hot water from flowing back into the cold water supply system
- safety, to prevent the medium in the storage heaters from reaching dangerous limits
- discharge tundish in accordance with the EN 1717 standard.

The expansion groups are **Kiwa certified as meeting the requirements of the EN 1488 European standard.**



Product range

Code 528518 Expansion group for hot water storage heaters size DN 15 (Ø 15) for copper pipe
 Code 528 Expansion group for hot water storage heaters size DN 15 (1/2")

Technical specifications

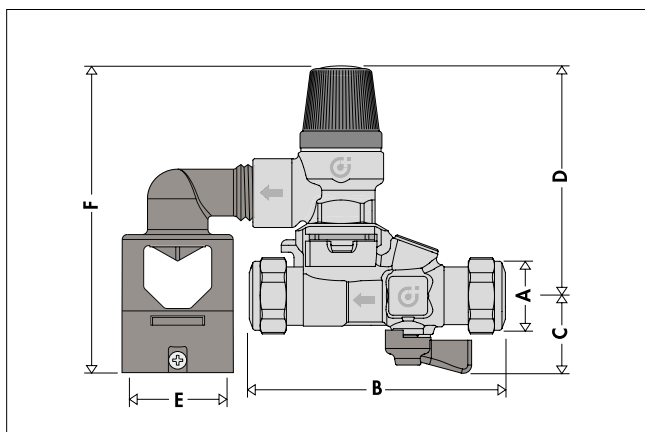
Materials

Body: brass EN 12165 CW617N
 Ball valve: brass EN 12164 CW617N
 Check valve: POM
 Expansion valve: brass EN 12165 CW617N
 Expansion valve obturator: EPDM
 Seals: EPDM
 Tundish: PP

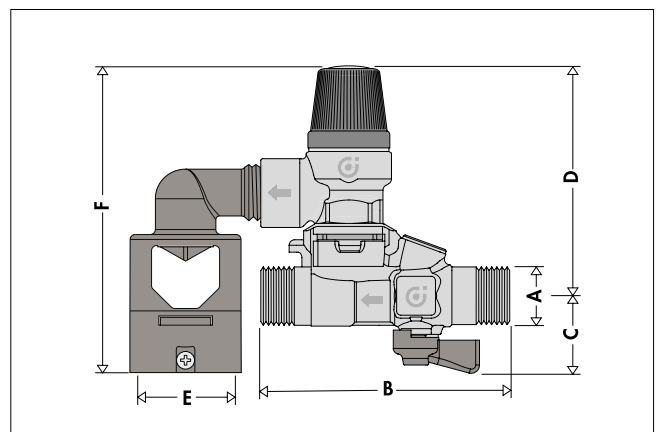
Performance

Medium: water
 Maximum working temperature: 40 °C
 Max. working pressure: 10 bar
 Expansion valve pressure setting: (528547) 7 bar
 (528518-528548) 8 bar
 (528540) 10 bar
 Connections: (528518) Ø 15 mm for copper pipe 1/2" F (ISO 228-1)
 Drain: Ø 40 mm pipe;

Dimensions



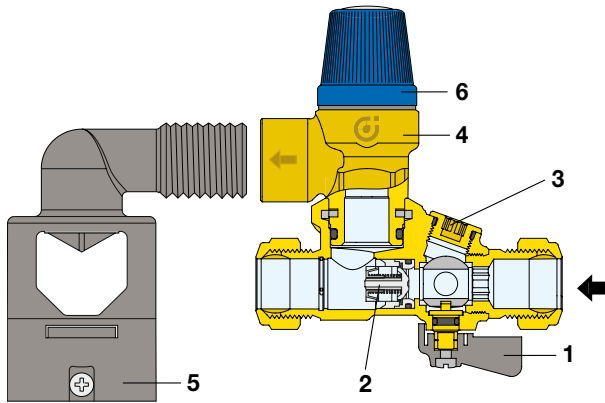
Code	A	B	C	D	E	F	Mass (kg)
528518	Ø15	93	28	83,5	40	119	0,432



Code	A	B	C	D	E	F	Mass (kg)
528547	1/2"	76	28	83,5	40	119	0,423
528548	1/2"	76	28	83,5	40	119	0,423
528540	1/2"	76	28	83,5	40	119	0,423

Characteristic components

- 1, Shut-off cock
- 2, Check valve, EA type
- 3, Cap for checking that the check valve is working
- 4, Expansion valve
- 5, Discharge tundish in accordance with the EN 1717 standard.
- 6, Manual discharge knob



Product certified in accordance with the EN 1488 European standard.

The *European Standard EN 1488: 2000*, under the heading “Building valves - Expansion groups - Tests and requirements”, describes build and performance specifications of expansion groups for hot water storage heaters.

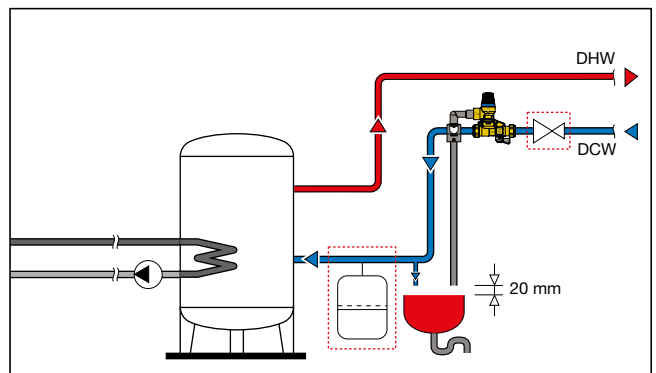
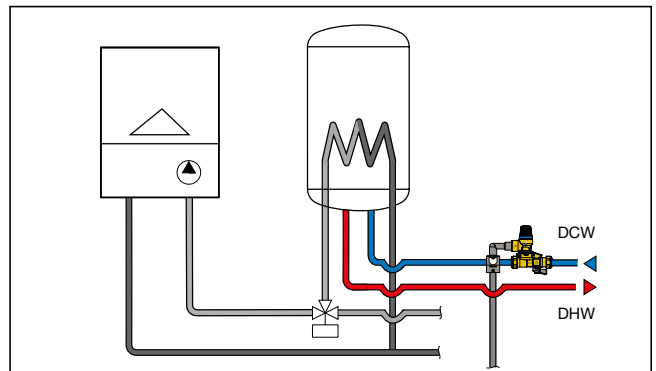
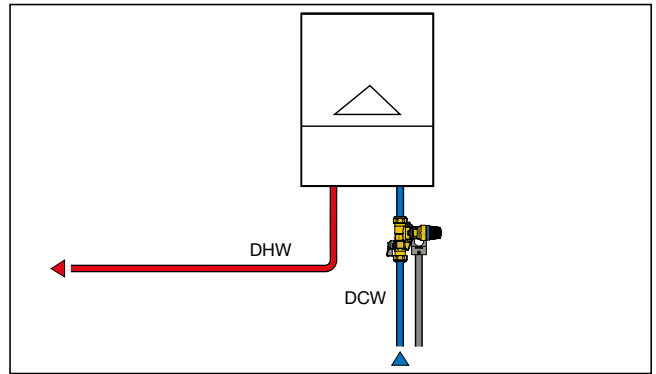
Caleffi 528 series expansion groups are Kiwa certified as meeting the requirements of the EN 1488 European standard.

Expansion groups must be classified according to the DN of the outlet to the boiler.

Application according to EN 1488

Size	DN 15
Connections	1/2" - Ø 15
Maximum volume of the hot water storage heater	200 l
Maximum power of the hot water storage heater	75 kW

Application diagrams



SPECIFICATION SUMMARY

Code 528518

Expansion group for hot water storage heaters. Certified to EN 1488. With shut-off valve and EA controllable check valve. Size DN 15. Boiler connection Ø 15 for copper pipe. Brass body. EPDM seals. Maximum working temperature 40 °C. Maximum working pressure 10 bar. Safety relief valve pressure setting 8 bar.

528 series

Expansion group for hot water storage heaters. Certified to EN 1488. With shut-off valve and EA controllable check valve. Size DN 15. Boiler connection 1/2" M. Brass body. EPDM seals. Maximum working temperature 40 °C. Maximum working pressure 10 bar. Safety relief valve pressure setting 7 bar (7, 8 and 10 bar).

We reserve the right to make changes and improvements to our products and the related technical data in this publication, at any time and without prior notice. The website www.caleffi.com always has the most up-to-date version of the document, which should be used for technical verifications.