



MULTIFUNCTION
DEVICE WITH
DIRT SEPARATOR
AND STRAINER
DIRTMAG^{PLUS}[®]

CALEFFI
Hydronic Solutions



Heating

Engineered components for modern systems



PCT
INTERNATIONAL
APPLICATION
PENDING

FUNCTIONS AND FEATURES

- The combined action of strainer and dirt separator guarantees maximum efficiency of impurity separation inside the system from the first pass.
- The dirt separator, positioned upstream of the strainer, prevents an increase in head losses due to gradual clogging.
- Eliminates magnetite present in the closed circuit, preserving the magnetic rotors of the circulators.
- Can be installed on horizontal or vertical pipes thanks to the adjustable fitting.
- Very fast and effective maintenance thanks to the bi-directional opening of the strainer, the magnetic ring that is easy to remove and the wide drain cock.
- Strainer cartridge fitted with fine-mesh strainer for first pass cleaning and with larger mesh strainer for ongoing operation.

PRODUCT RANGE



CODE	CONNECTION
545375	3/4" F
545376	1" F
545372	Ø 22
545373	Ø 28

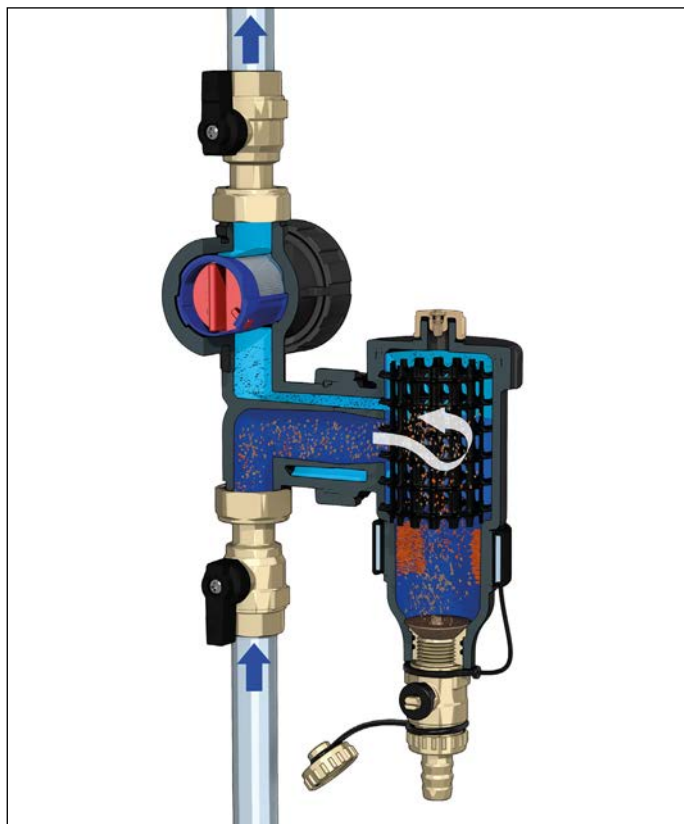
TECHNICAL SPECIFICATIONS

Working temperature range	0–90°C
Max. working pressure	3 bar
Medium	water, glycol solutions
Max glycol	30%

OPERATING PRINCIPLE

The multifunction device is made up of a dirt separator and a cartridge strainer arranged in series.

The dirt separator separates the impurities present in the water through the action of its internal element and retains the ferrous particles thanks to the action of two magnets. The cartridge strainer separates the impurities through mechanical selection of the particles based on their size through a special metal filtering mesh. Maximum efficiency of particle separation at the first pass is thereby obtained.



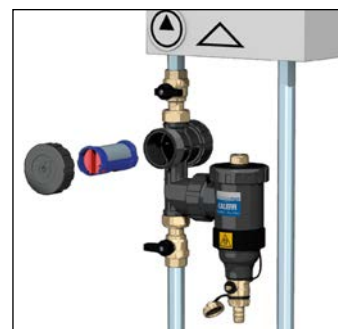
REFERENCE DOCUMENTATION

5453 series - Technical brochure 01258

CARTRIDGE STRAINER

The (blue) strainer downstream of the dirt separator, which is fitted with a special filtering mesh, blocks all particles that remain in circulation, cleaning the pipes at the first pass very effectively, to protect the generator and the system components. The strainer is also fitted with a second (grey) cartridge fitted with a larger filtering mesh, to be used during ongoing phase, after the first passage.

The large capacity strainer cartridge is made of two parts: an outer body with stainless steel mesh and an internal impurity collector, appropriately shaped.

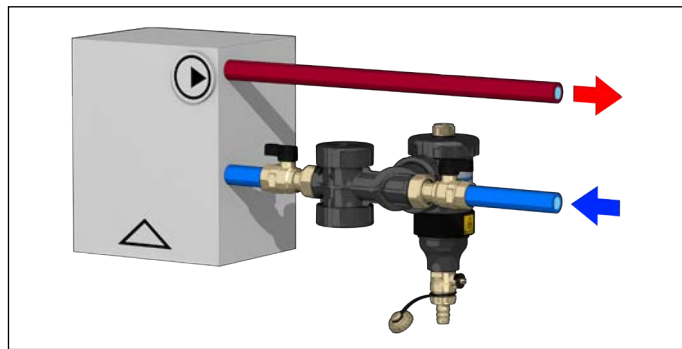
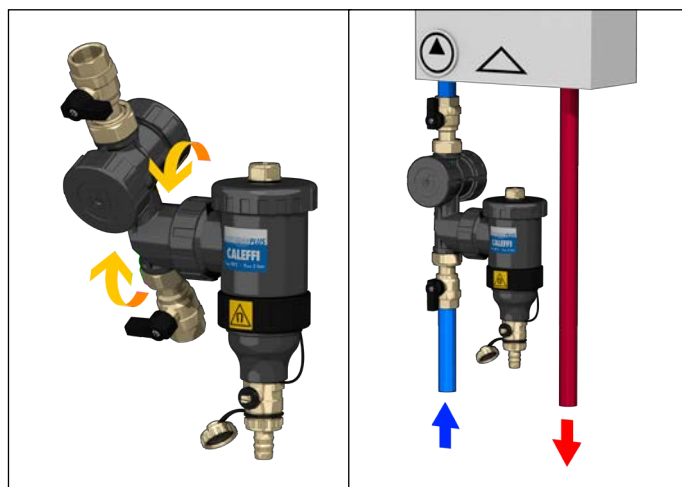


Dirt collector

First passage strainer
Mesh size Ø = 0,30 mm

Maintenance strainer
Mesh size Ø = 0,80 mm

INSTALLATION



CALEFFI
Hydronic Solutions

0355917GB