



Caleffi XF™

XTRA FILTRATION MAGNETIC DIRT SEPARATOR
577 SERIES

CALEFFI
Hydronic Solutions



PRODUCT FEATURES

- **Innovative magnetic dirt separator with filter:**
Equipped with an exclusive “first pass filter” featuring an internal scrub brush mechanism along with magnetic and non-magnetic separation technology to deliver state-of-the-art protection for today’s modern equipment.
- **Self contained filter cleaning brushes:**
The innovative manual rotating cap controls the built-in brush, guaranteeing a hassle-free cleaning process without the need for disassembly.
- **Separation of ferrous impurities:**
The removable central magnet, within a drywell, separates and collects ferrous impurities.
- **Effortless maintenance with hose barb blowdown:**
Turn off the circulator, remove the magnet and open the blowdown valve. Then rotate the brush to clean the mesh filter and discharge all impurities.
- **Rotating collar:**
The XF can be conveniently installed in either horizontal or vertical pipes for on-the-job flexibility.
- **Bypass feature to improve system efficiency:**
1¼” and 1½” models have a 50% bypass adjustment to reduce pressure drop once the system is flushed and running.

“Xtra Filtration” for Hydronic Systems

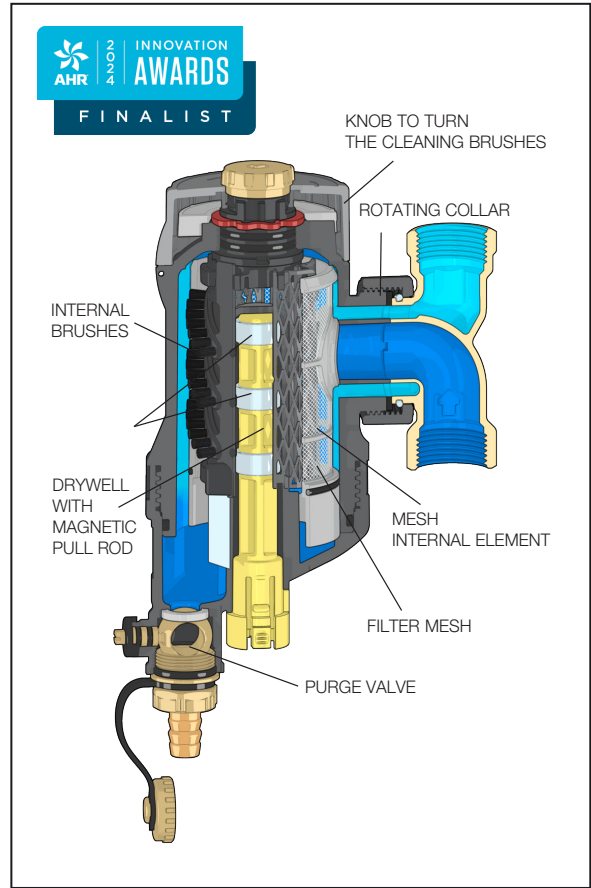
The CALEFFI XF “Xtra Filtration” magnetic dirt separator is designed to provide state-of-the-art protection for today’s high efficiency heat pumps and condensing boiler systems. Equipped with an exclusive “first pass filter” featuring an internal scrub brush mechanism along with magnetic and non-magnetic separation technology that Caleffi is renowned for, the XF delivers state-of-the-art protection to ensure today’s modern equipment operates at peak efficiency.

PRODUCT RANGE - 577 Series Xtra Filtration Magnetic Dirt Separator



SIZES	CODE		
	SWEAT	PRESS	NPT
1"	577669A	577666A	577660A
1-1/4"	577879A	577876A	577870A
1-1/2"	577989A	577986A	577980A

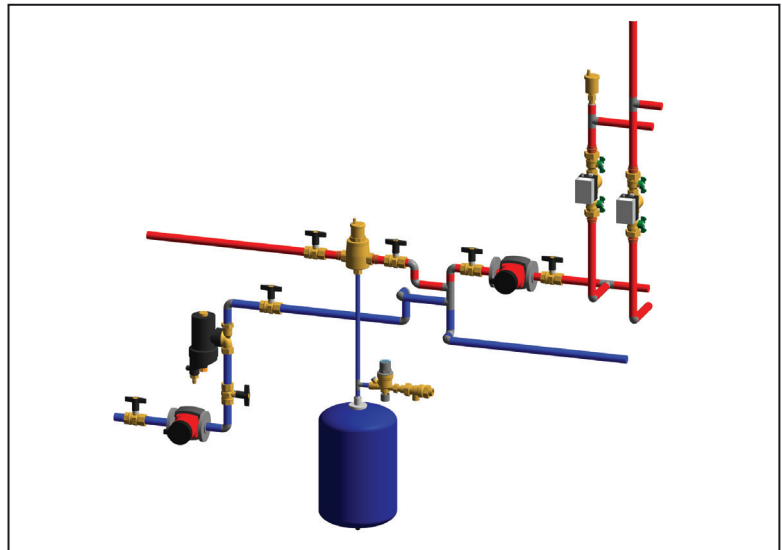
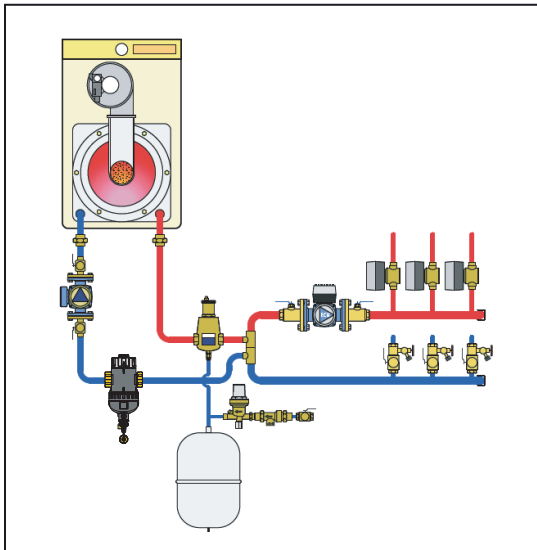
CONSTRUCTION



PERFORMANCE

MAX. WORKING PRESSURE	45 psi (3 bar)
SETTING TEMPERATURE RANGE	32 – 212 °F (0 – 100 °C)
MEDIUM	Water & Glycol solution

APPLICATION DIAGRAM



03662-24 NA | Caleffi24-002

Caleffi Partner:

WE RESERVE THE RIGHT TO CHANGE OUR PRODUCTS AND THEIR RELEVANT TECHNICAL DATA, CONTAINED IN THIS PUBLICATION, AT ANY TIME AND WITHOUT PRIOR NOTICE.



Caleffi North America, Inc.
sales@caleffi.com · www.caleffi.com
© Copyright 2024 Caleffi North America, Inc.