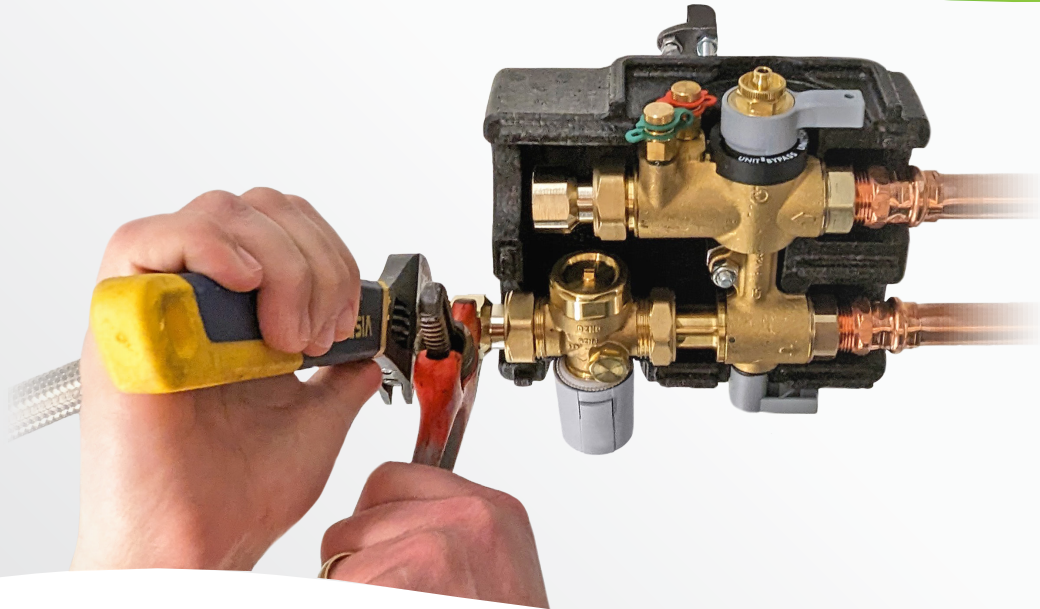




## FLOWMATIC® EXPRESS COIL KIT

CONNECTION AND REGULATION KIT FOR HVAC TERMINAL UNITS  
149 SERIES



### PRODUCT FEATURES

- **Compact multi-function package:**  
Provides flow control, balancing, bypass, filtering and isolation functions for maintenance and flushing of the terminal unit. Insulation jacket included with each kit.
- **Minimizes pipe connections and installation labor:**  
Requires only four field connections compared to competitors' need for up to 20, for fewer potential leak points. Fast installation reduces labor hours.
- **Control versatility with integral PICV:**  
Pressure independent control valve with manual adjustment for maximum flow. Optional on/off or proportional control actuator for connection to local controller or BAS.
- **Built-in strainer:**  
Removable strainer on inlet captures impurities before they reach and damage the coil. Easy to unscrew, rinse clean and put back into service in minutes.
- **Flow rate regulation up to 16 GPM:**  
Integral Venturi allows system flow rate measurement and verification using a differential pressure tool.
- **Integrated bypass and 3-way valves:**  
Bypass enables flushing of the supply/return lines. 3-way valves allow isolation of the terminal unit for service.

### Durable construction for long life

The compact, pre-assembled Kit connects VAV reheat boxes, fan-coils, chilled beams or ceiling-mounted terminal units with the main hydronic distribution system. It provides flow control, balancing, bypass, filtering and isolation functions for maintenance of the terminal unit and flushing of the system. The integral Venturi with PT ports allows the Kit to be sized to match the terminal unit design flow rate. It includes a preformed insulation jacket. Optional on/off or modulating actuators add automatic control for connection to a local controller or BAS.

# PRODUCT RANGE - FLOWMATIC EXPRESS COIL KIT

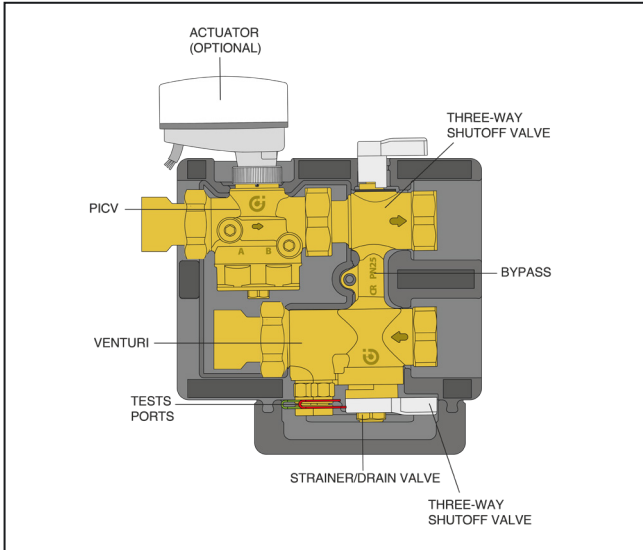


SIZE	CODE
	NPT
1/2"	149400A G40
	149400A G90
	149400A 1G8
	149400A 3G5
3/4"	149500A G90
	149500A 1G8
	149500A 3G5
	149500A 5G3
1"	149600A 7G9
	149600A 13G
	149600A 16G

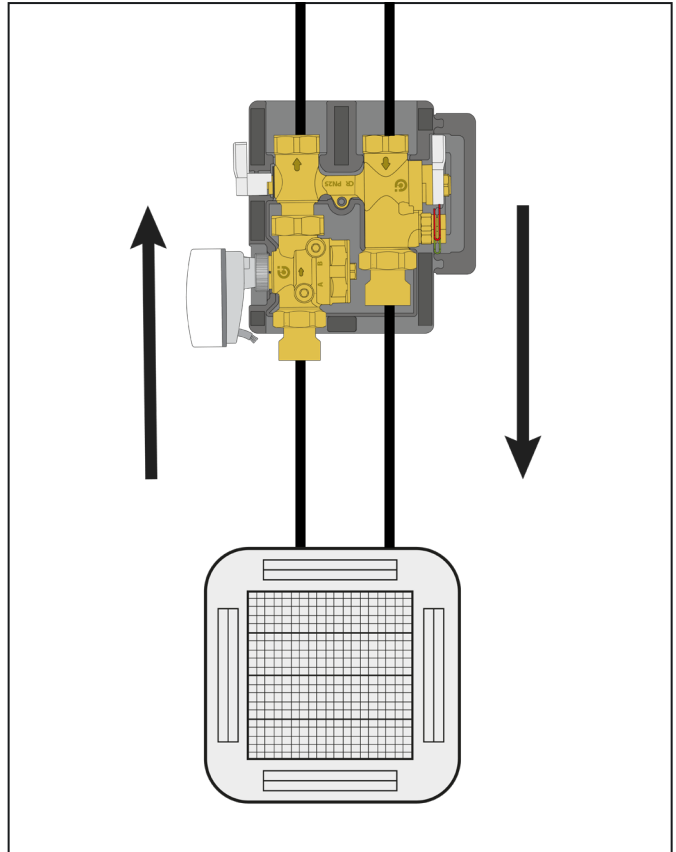
## PERFORMANCE

MAX. WORKING PRESSURE	360 psi (25 bar)
WORKING TEMPERATURE	14 – 248 °F (-10 – 120 °C)
FLOW RATE RANGES	0.1 - 0.4 to 8.0 - 16 gpm
AMBIENT TEMPERATURE	32 – 120 °F (10 – 50 °C)

## CONSTRUCTION



## APPLICATION DIAGRAM



03608-24 NA | Caleffi24-003

Caleffi Partner:

WE RESERVE THE RIGHT TO CHANGE OUR PRODUCTS AND THEIR RELEVANT TECHNICAL DATA, CONTAINED IN THIS PUBLICATION, AT ANY TIME AND WITHOUT PRIOR NOTICE.



Caleffi North America, Inc.  
sales@caleffi.com · www.caleffi.com  
© Copyright 2024 Caleffi North America, Inc.